



Bodicote,
Banbury, Oxfordshire

Bodicote, Banbury, Oxfordshire.

A spacious three-bedroom end-terrace home featuring an enclosed rear garden, off-street parking, and offered for sale with no onward chain.

Bodicote is a lively and thriving village. It has a community feel, with such groups as the cricket club and amateur dramatics group. It has a farm shop, two public houses, an Indian restaurant and a local primary school, the Bishop Loveday Church of England Primary School. It is near to the town of Banbury yet retains the feel of a village. It is within walking and cycling distance of bridleways and the canal towpath, where you can enjoy the countryside.

Bodicote also benefits from excellent transport links. The nearby town of Banbury provides a mainline railway station with regular services to London, Birmingham and Oxford, making it an ideal location for commuters. The village also has convenient access to the M40 motorway (Junction 11), providing good road connections to Oxford, Birmingham, London and the wider motorway network. Regular bus services connect Bodicote with Banbury and surrounding villages, offering convenient public transport options.



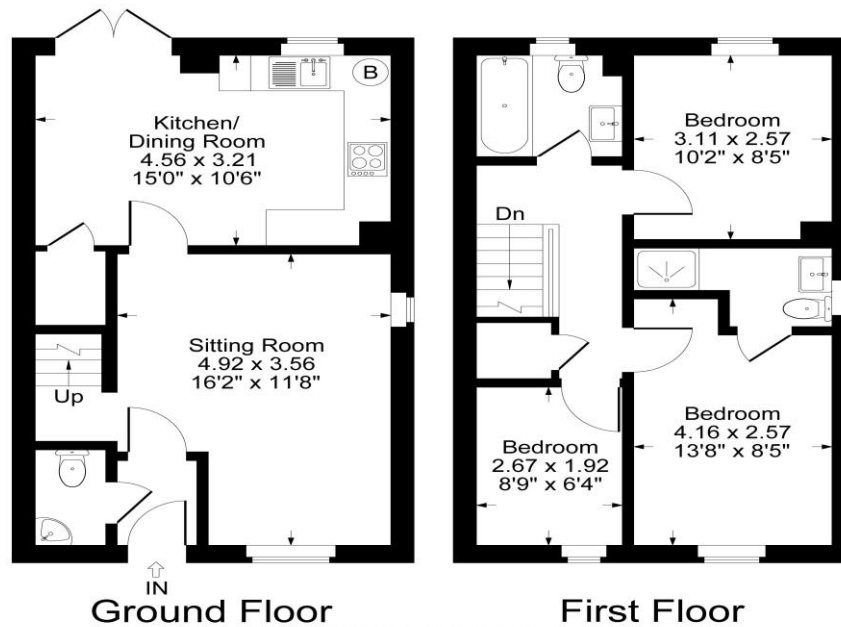


The Property Briefly Comprises of:

- Entrance Hallway
- Cloakroom
- Sitting Room
- Kitchen/Dining Room
- Double Bedroom with En-Suite
- Two Further Bedrooms
- Family Bathroom
- Enclosed Rear Garden
- Private Parking for Two Cars
- Gas Central Heating
- Double glazed Windows
- No Onward Chain



Guide Price: £350,000



Ground Floor

First Floor

Approximate Gross Internal Area
Ground Floor = 37.75 sq m / 406 sq ft
First Floor = 37.75 sq m / 406 sq ft
Total Area = 75.5 sq m / 812 sq ft
Illustration for identification purposes only,
measurements are approximate, not to scale.

Local Authority: Cherwell

Council Tax Band: C

(Subject to change after completion)

Tenure: Freehold

Distances

- Banbury c. 2 miles
- Deddington c. 4 miles
- Chipping Norton c. 12 miles
- Bicester c. 13 miles
- Oxford c. 22 miles
- Stratford-Upon-Avon c. 29 miles
- Birmingham c. 54 miles
- M40 Access c. 3 Miles
- London via Bicester c. 43 minutes

Buyers Purchase Fee:

Please note that buyers are required to pay a Purchase Fee of £300 (inc. of VAT) to Mark David on offer acceptance, to process a new transaction.

Mark David
ESTATE AGENTS
Sales • Lettings • Management

Market House, Market Place, Deddington, Oxfordshire
OX15 0SB
Tel: 01869 338898
Email: deddington@mark-david.co.uk
www.mark-david.co.uk



Important Notice

Mark David Estate Agents for themselves and their clients give notice that:-

1. They are not authorised to make or give representation or warranty in relation to this property, either on their own behalf or on behalf of the Seller. They assume no responsibility for any statement made in these particulars. These particulars do not form part of any offer or contract and must not be relied upon as statements or representations of fact.
2. Whilst every attempt has been made to ensure the accuracy of the floorplan contained here, measurements of doors, windows, rooms and any other items are approximate and no responsibility is taken for any error, omission, or mis-statement.
3. All areas, measurements or distances are approximate. The particulars are intended for guidance only and are not necessarily comprehensive. A wide angle lens may have been used in photography. Mark David Estate Agents have not tested appliances or services and it should not be assumed that the property has all necessary planning, building regulation and other consents. Buyers must satisfy themselves with the property by inspection or otherwise.
4. Reference to any mechanical or electrical equipment does not constitute a representation that such equipment is capable of fulfilling its function and prospective Buyers must make their own enquiries.
5. They have no responsibility for any expenses or costs incurred by prospective Buyers in inspecting properties which have been sold, let or withdrawn. Applicants are advised to contact the Agent to check availability and any other information of particular importance to them, prior to inspecting the property, particularly if traveling some distance.