



Adderbury,
Banbury, Oxfordshire

Adderbury, Banbury, Oxfordshire.

A four double bedroom detached home, with double garage and ample parking in a quiet residential development, in a well served and sought after village. No onward chain.

The picturesque village of Adderbury offers many amenities including a hotel and Public Houses, Hairdressers, Library, Coffee Shop, Recreation Ground and the Church of St Mary. The village has a good community spirit and offers many clubs ranging from babies and toddlers' groups, to Brownies, Scouts, Photography, Gardening, WI, Bowls, Cricket, Tennis and Squash.

Also, within the village there is the Christopher Rawlins Church of England primary school. Secondary education can be found at Bloxham – the Warriner School or Bloxham School which is an independent co-educational school catering for boarders and day pupils. Alternatively, secondary education can be found at Banbury - Blessed George Napier School or North Oxfordshire Academy.

Further comprehensive facilities can be found in both Banbury and Oxford whilst access to the M40 motorway can be gained at Junctions 10 or 11. Mainline stations are also available from both Banbury and Bicester.





The Property Briefly Comprises of:

- Detached Residence
- Entrance Hallway
- Cloakroom
- Study
- Dual Aspect Sitting Room
- Kitchen/Dining Room
- Utility Room
- Principal Bedroom with En-Suite
- Three Further Double Bedrooms
- Family Bathroom
- Enclosed Rear Garden
- Double Garage
- Own Driveway
- No Onward Chain

Guide Price: £650,000



Approximate Gross Internal Area
 Main House = 155.78 sq.m / 1676 sq.ft
 Garage = 40.95 sq.m / 441 sq.ft
Total = 196.73 sq.m / 2117 sq.ft

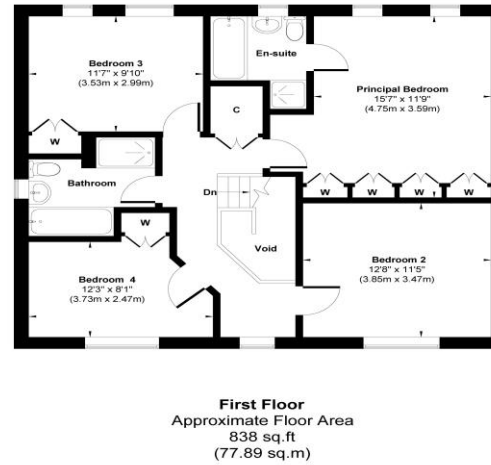
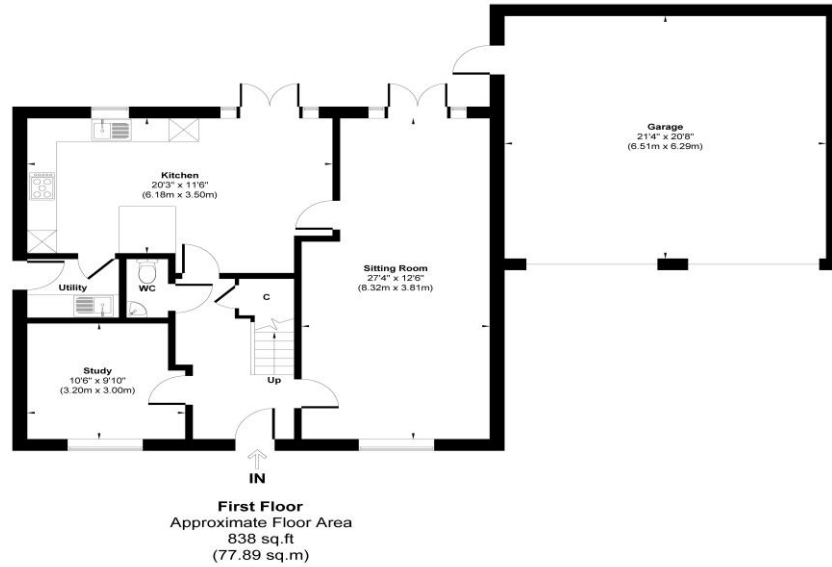


Illustration for identification purpose only, measurements approximate and not to scale.

Local Authority: Cherwell

Council Tax Band: F

(Subject to change after completion)

Tenure: Freehold

Distances

- Deddington c. 3 miles
- Banbury c. 4 miles
- Chipping Norton c. 13 miles
- Oxford c. 21 miles
- Birmingham c. 55 miles
- London c. 74 miles
- M40 Access c. 5 Miles
- London via Bicester c. 43 minutes

Buyers Purchase Fee:

Please note that buyers are required to pay a Purchase Fee of £300 (inc. of VAT) to Mark David on offer acceptance, to process a new transaction.

Mark David
 ESTATE AGENTS
 Sales • Lettings • Management

Market House, Market Place, Deddington, Oxfordshire
 OX15 0SB
 Tel: 01869 338898
 Email: deddington@mark-david.co.uk
www.mark-david.co.uk

Important Notice

Mark David Estate Agents for themselves and their clients give notice that:-

1. They are not authorised to make or give representation or warranty in relation to this property, either on their own behalf or on behalf of the Seller. They assume no responsibility for any statement made in these particulars. These particulars do not form part of any offer or contract and must not be relied upon as statements or representations of fact.
2. Whilst every attempt has been made to ensure the accuracy of the floorplan contained here, measurements of doors, windows, rooms and any other items are approximate and no responsibility is taken for any error, omission, or mis-statement.
3. All areas, measurements or distances are approximate. The particulars are intended for guidance only and are not necessarily comprehensive. A wide angle lens may have been used in photography. Mark David Estate Agents have not tested appliances or services and it should not be assumed that the property has all necessary planning, building regulation and other consents. Buyers must satisfy themselves with the property by inspection or otherwise.
4. Reference to any mechanical or electrical equipment does not constitute a representation that such equipment is capable of fulfilling its function and prospective Buyers must make their own enquiries.
5. They have no responsibility for any expenses or costs incurred by prospective Buyers in inspecting properties which have been sold, let or withdrawn. Applicants are advised to contact the Agent to check availability and any other information of particular importance to them, prior to inspecting the property, particularly if traveling some distance.

