



Adderbury,
Banbury, Oxfordshire

Adderbury, Banbury, Oxfordshire.

A thoughtfully reimagined detached four bedroomed home, with a garage and plenty of parking in a delightful village setting.

The attractive Oxfordshire village of Adderbury combines a peaceful rural setting with a lively and welcoming community. The village is characterised by its charming stone houses, historic church and open countryside outlook. Local amenities include a popular village shop, a primary school and traditional public houses, all of which help create a strong sense of community. Adderbury is also well known for its long-standing Morris dancing tradition, adding to the village's unique character and appeal.

The village is conveniently located for access to the nearby market town of Banbury, which offers a wide choice of shops, schools, leisure facilities and a mainline railway station with direct services to London and Birmingham. Excellent road connections provide straightforward travel to Oxford, Bicester Village and the surrounding Cotswolds. With beautiful countryside walks close at hand and practical amenities nearby, Adderbury offers an ideal balance of village living and everyday convenience.





The Property Briefly Comprises of:

- Detached Dormer Bungalow

Ground Floor

- Entrance Hall
- Cloakroom
- Kitchen/Breakfast Room
- Living Room
- Double Bedroom with En-Suite
- Reception Room/Double Bedroom

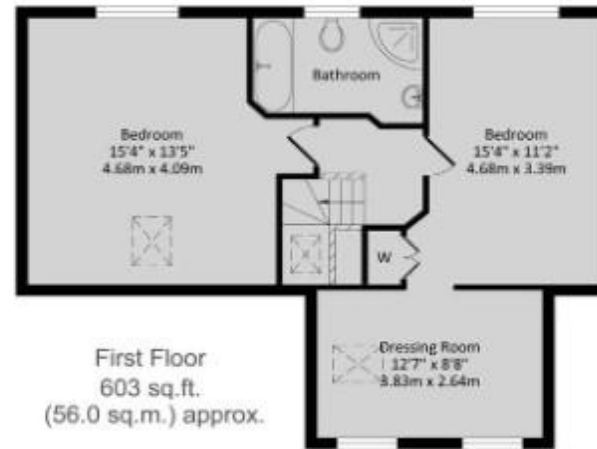
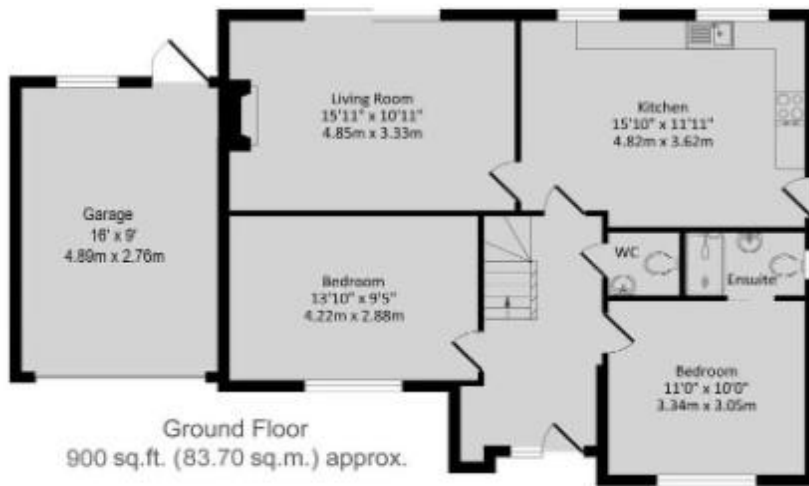
First Floor

- Double Bedroom with Dressing Room
- Double Bedroom
- Bath/Shower Room

Outside

- Own Driveway
- Enclosed Rear Garden
- Garage

Guide Price: £585,000



TOTAL APPROX. FLOOR AREA 1359 sq.ft. (126.20 sq.m.) approx.

Whilst every attempt has been made to ensure the accuracy of the floor plan contained here, measurements of doors, windows, rooms and any other items are approximate and no responsibility is taken for any error, omission, or mis-statement. This plan is for illustrative purposes only and should be used as such by any prospective purchaser. The services, systems and appliances shown have not been tested and no guarantee is given.

Local Authority: Cherwell

Council Tax Band: D

(Subject to change after completion)

Tenure: Freehold

Distances

Deddington c. 3 miles

Banbury c. 4 miles

Chipping Norton c. 13 miles

Oxford c. 21 miles

Birmingham c. 55 miles

London c. 74 miles

M40 Access c. 5 Miles

London via Bicester c. 43 minutes

Buyers Purchase Fee:

Please note that buyers are required to pay a Purchase Fee of £300 (inc. of VAT) to Mark David on offer acceptance, to process a new transaction.

Mark David

ESTATE AGENTS

Sales • Lettings • Management

Market House, Market Place, Deddington, Oxfordshire

OX15 0SB

Tel: 01869 338898

Email: deddington@mark-david.co.uk

www.mark-david.co.uk

Important Notice

Mark David Estate Agents for themselves and their clients give notice that:-

1. They are not authorised to make or give representation or warranty in relation to this property, either on their own behalf or on behalf of the Seller. They assume no responsibility for any statement made in these particulars. These particulars do not form part of any offer or contract and must not be relied upon as statements or representations of fact.
2. Whilst every attempt has been made to ensure the accuracy of the floorplan contained here, measurements of doors, windows, rooms and any other items are approximate and no responsibility is taken for any error, omission, or mis-statement.
3. All areas, measurements or distances are approximate. The particulars are intended for guidance only and are not necessarily comprehensive. A wide angle lens may have been used in photography. Mark David Estate Agents have not tested appliances or services and it should not be assumed that the property has all necessary planning, building regulation and other consents. Buyers must satisfy themselves with the property by inspection or otherwise.
4. Reference to any mechanical or electrical equipment does not constitute a representation that such equipment is capable of fulfilling its function and prospective Buyers must make their own enquiries.
5. They have no responsibility for any expenses or costs incurred by prospective Buyers in inspecting properties which have been sold, let or withdrawn. Applicants are advised to contact the Agent to check availability and any other information of particular importance to them, prior to inspecting the property, particularly if traveling some distance.

