



Steeple Aston,
Bicester, Oxfordshire

Steeple Aston, Bicester, Oxfordshire.

Nestled at the end of a cul-de-sac, this versatile 3-4-bedroom home has been thoughtfully extended and remodeled, featuring a wonderful open-plan kitchen/family room with bi-fold doors opening onto the rear garden and enjoying further countryside views.

Set in the heart of North Oxfordshire, Steeple Aston is a highly regarded village known for its strong sense of community, attractive period homes and quintessential English character. The village offers everyday amenities including a well-regarded primary school, village shop, post office, public house and active village hall, all surrounded by gently rolling countryside and scenic walking routes. Its traditional stone houses, historic church and village green create a timeless setting that appeals to families and professionals alike.

Despite its rural charm, Steeple Aston is exceptionally well connected. The nearby market town of Bicester provides excellent shopping, dining and rail links, including fast services to London Marylebone, while the M40 offers swift access to Oxford, London and the Midlands. Combining peaceful village living with outstanding connectivity, Steeple Aston represents an ideal balance of countryside tranquillity and modern convenience.





The Property Briefly Comprises of:

- End Of Terrace Residence
- Entrance Hall
- Cloakroom
- Study/Forth Bedroom
- Dual Aspect Living Room
- Kitchen/Dining/Living Room
- Utility Room
- Three Bedrooms
- Family Bathroom
- Own Driveway
- Enclosed Rear Garden
- Countryside Views



Guide Price: £425,000



Approximate Gross Internal Area = 124.94 sq.m / 1345 sq.ft

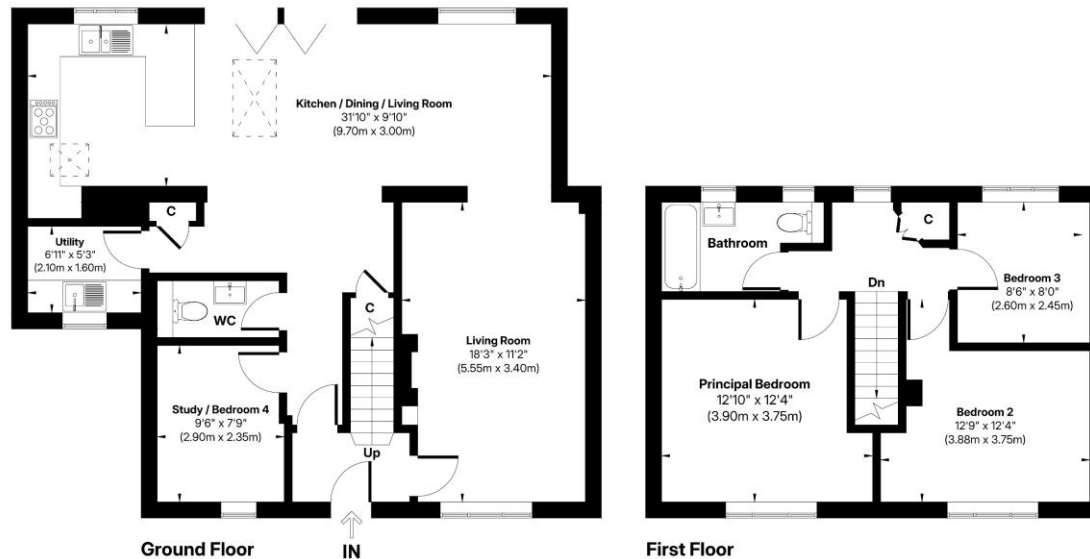


Illustration for identification purposes only. Measurements approximate and not to scale.

Local Authority: Cherwell

Council Tax Band: C

(Subject to change after completion)

Tenure: Freehold

Distances

- Bicester c. 8 miles
- Banbury c. 10 miles
- Chipping Norton c. 11 miles
- Oxford c. 15 miles
- Birmingham c. 61 miles
- London c. 68 miles
- M40 J10 c. 8 miles

Buyers Purchase Fee:

Please note that buyers are required to pay a Purchase Fee of £300 (inc. of VAT) to Mark David on offer acceptance, to process a new transaction.

Mark David
ESTATE AGENTS
Sales • Lettings • Management

Market House, Market Place, Deddington, Oxfordshire
OX15 0SB
Tel: 01869 338898
Email: deddington@mark-david.co.uk
www.mark-david.co.uk

Important Notice

Mark David Estate Agents for themselves and their clients give notice that:-

1. They are not authorised to make or give representation or warranty in relation to this property, either on their own behalf or on behalf of the Seller. They assume no responsibility for any statement made in these particulars. These particulars do not form part of any offer or contract and must not be relied upon as statements or representations of fact.
2. Whilst every attempt has been made to ensure the accuracy of the floorplan contained here, measurements of doors, windows, rooms and any other items are approximate and no responsibility is taken for any error, omission, or mis-statement.
3. All areas, measurements or distances are approximate. The particulars are intended for guidance only and are not necessarily comprehensive. A wide angle lens may have been used in photography. Mark David Estate Agents have not tested appliances or services and it should not be assumed that the property has all necessary planning, building regulation and other consents. Buyers must satisfy themselves with the property by inspection or otherwise.
4. Reference to any mechanical or electrical equipment does not constitute a representation that such equipment is capable of fulfilling its function and prospective Buyers must make their own enquiries.
5. They have no responsibility for any expenses or costs incurred by prospective Buyers in inspecting properties which have been sold, let or withdrawn. Applicants are advised to contact the Agent to check availability and any other information of particular importance to them, prior to inspecting the property, particularly if traveling some distance.

