



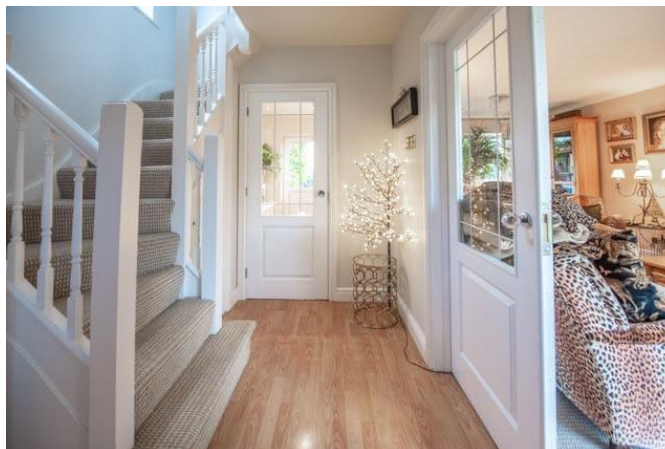
Bloxham,
Banbury, Oxfordshire

Bloxham, Banbury, Oxfordshire.

A thoughtfully remodelled and beautifully maintained four-bedroom home arranged over three floors, featuring two reception rooms and a kitchen/dining room. The property also benefits from a lovely private rear garden and off-road parking to the front.

Bloxham is one of North Oxfordshire's most sought-after villages, located just a few miles south-west of Banbury and surrounded by attractive rolling countryside. Rich in history and character, the village is known for its beautiful honey-coloured ironstone cottages, the striking parish church of St Mary's, and a strong sense of community.

Bloxham offers an excellent range of local amenities including a well-regarded primary school, local shops, traditional pubs, a health centre and sports facilities, making it ideal for families and professionals alike. The village enjoys convenient access to Banbury's mainline railway station with fast services to London and Birmingham, as well as excellent road links via the M40. Combining picturesque rural charm with everyday convenience, Bloxham provides a highly desirable setting for village.





This Property Comprises:

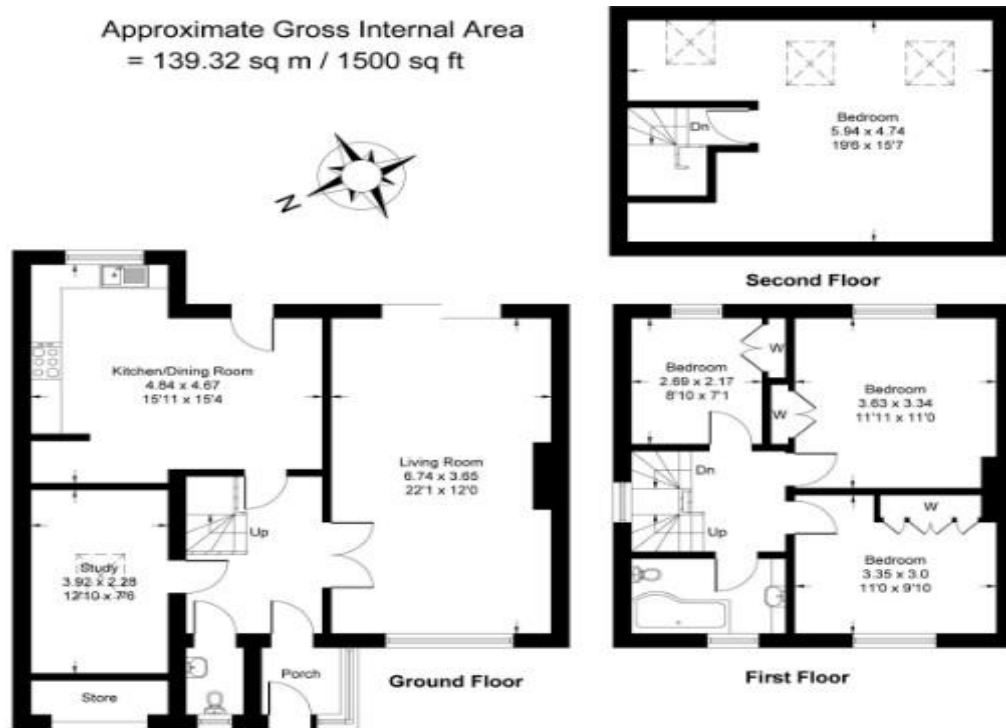
- Semi-Detached
- Porch
- Entrance Hall
- Cloakroom
- Dual Aspect Living Room
- Study
- Kitchen/Dining Room
- Four Bedrooms
- Family Bathroom
- Enclosed Rear Garden
- Large double-sized shed
- Driveway



Guide Price: £450,000



Approximate Gross Internal Area
= 139.32 sq m / 1500 sq ft



Whilst every attempt has been made to ensure the accuracy of the floor plan contained here, measurements of doors, windows, rooms and any other items are approximate and no responsibility is taken for any error, omission, or misstatement. This plan is for illustrative purposes only and should be used as such by any prospective purchaser.

Local Authority: Cherwell

Council Tax Band: D

(Subject to change after completion)

Tenure: Freehold

Distances

- Banbury c. 3 miles
- Deddington c. 4 miles
- Chipping Norton c. 9 miles
- Oxford c. 23 miles
- Birmingham c. 55 miles
- London c. 81 miles
- M40 access c. 6 miles
- Banbury to London Marylebone c. 1 hour

Buyers Purchase Fee:

Please note that buyers are required to pay a Purchase Fee of £300 (inc. of VAT) to Mark David on offer acceptance, to process a new transaction.

Mark David
ESTATE AGENTS
Sales • Lettings • Management

Market House, Market Place, Deddington, Oxfordshire
OX15 0SB
Tel: 01869 338898
Email: deddington@mark-david.co.uk
www.mark-david.co.uk



Important Notice

Mark David Estate Agents for themselves and their clients give notice that:-

1. They are not authorised to make or give representation or warranty in relation to this property, either on their own behalf or on behalf of the Seller. They assume no responsibility for any statement made in these particulars. These particulars do not form part of any offer or contract and must not be relied upon as statements or representations of fact.
2. Whilst every attempt has been made to ensure the accuracy of the floorplan contained here, measurements of doors, windows, rooms and any other items are approximate and no responsibility is taken for any error, omission, or mis-statement.
3. All areas, measurements or distances are approximate. The particulars are intended for guidance only and are not necessarily comprehensive. A wide angle lens may have been used in photography. Mark David Estate Agents have not tested appliances or services and it should not be assumed that the property has all necessary planning, building regulation and other consents. Buyers must satisfy themselves with the property by inspection or otherwise.
4. Reference to any mechanical or electrical equipment does not constitute a representation that such equipment is capable of fulfilling its function and prospective Buyers must make their own enquiries.
5. They have no responsibility for any expenses or costs incurred by prospective Buyers in inspecting properties which have been sold, let or withdrawn. Applicants are advised to contact the Agent to check availability and any other information of particular importance to them, prior to inspecting the property, particularly if traveling some distance.