



Brackley,
Northamptonshire

Brackley, Northamptonshire,

A delightful double-fronted cottage blending character charm with open-plan living. With two double bedrooms and a rear garden, this perfect retreat is on the doorstep of Brackley town centre.

Brackley is a market town in Northamptonshire, England, on the borders with Oxfordshire and Buckinghamshire. It is an historic market town which was built on the intersecting trade routes between London, Birmingham and the Midlands and Cambridge and Oxford. Brackley is close to Silverstone and home to the Mercedes AMG Petronas F1 Team.

There are a several public houses, restaurants and cafes, supermarkets such as Tesco, Waitrose and also Co-Op. There is a post office as well as primary schools, secondary schools and Magdalen College.





The Property Briefly Comprises of:

- Double Fronted Cottage
- Open Plan Kitchen/Dining/Living Room
- Two Bedrooms
- Bathroom
- Enclosed Rear Courtyard
- No Onward Chain



Guide Price: £300,000

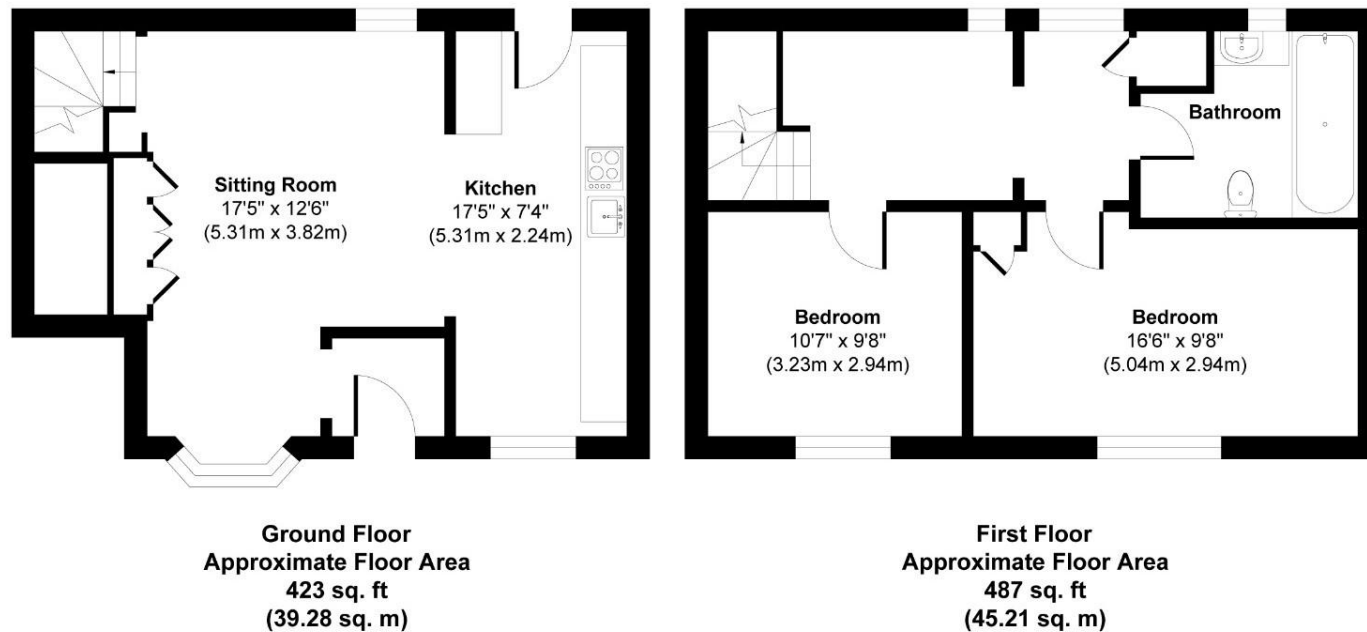


Illustration for identification purpose only, measurements are approximate not to scale.



Local Authority: South Northamptonshire

Council Tax Band: B

(Subject to change after completion)

Tenure: Freehold

Distances

- Banbury c. 13 miles
- Bicester c. 11 miles
- Oxford c. 19 miles
- Northampton c. 22 miles
- Birmingham c. 60 miles
- M40 J10 c. 7 miles
- Bicester – London Marylebone c. 1 hour

Buyers Purchase Fee:

Please note that buyers are required to pay a Purchase Fee of £300 (inc. of VAT) to Mark David on offer acceptance, to process a new transaction.

Important Notice

Mark David Estate Agents for themselves and their clients give notice that:-

1. They are not authorised to make or give representation or warranty in relation to this property, either on their own behalf or on behalf of the Seller. They assume no responsibility for any statement made in these particulars. These particulars do not form part of any offer or contract and must not be relied upon as statements or representations of fact.
2. Whilst every attempt has been made to ensure the accuracy of the floorplan contained here, measurements of doors, windows, rooms and any other items are approximate and no responsibility is taken for any error, omission, or mis-statement.
3. All areas, measurements or distances are approximate. The particulars are intended for guidance only and are not necessarily comprehensive. A wide angle lens may have been used in photography. Mark David Estate Agents have not tested appliances or services and it should not be assumed that the property has all necessary planning, building regulation and other consents. Buyers must satisfy themselves with the property by inspection or otherwise.
4. Reference to any mechanical or electrical equipment does not constitute a representation that such equipment is capable of fulfilling its function and prospective Buyers must make their own enquiries.
5. They have no responsibility for any expenses or costs incurred by prospective Buyers in inspecting properties which have been sold, let or withdrawn. Applicants are advised to contact the Agent to check availability and any other information of particular importance to them, prior to inspecting the property, particularly if traveling some distance.