

Mark David  
FOR SALE  
01608 644 944  
mark-david.co.uk

Hook Norton,  
Banbury, Oxfordshire



## Hook Norton, Banbury, Oxfordshire.

A charming semi-detached stone cottage that perfectly blends period character with contemporary style, complete with a private enclosed garden and a detached home office.

Hook Norton is a picturesque and well-connected village nestled in the rolling countryside of North Oxfordshire, offering a perfect blend of rural charm and modern convenience. Known for its handsome stone cottages, traditional pubs, and thriving local community, the village provides an inviting setting for families, professionals, and retirees alike. Everyday amenities are well catered for, with a village shop, post office, doctor's surgery, highly regarded primary school, and a range of clubs and societies that contribute to a warm and active community spirit.

The village is perhaps best known for the historic Hook Norton Brewery, a celebrated local landmark that adds character and attracts visitors year-round. Surrounded by scenic footpaths and bridleways, the area is ideal for walking, cycling, and exploring the Cotswolds countryside. Despite its peaceful atmosphere, Hook Norton remains conveniently placed for travel, with nearby Banbury offering fast rail links to Oxford, Birmingham, and London, as well as easy access to the M40. Together, these features make Hook Norton an appealing location for those seeking a quintessential village lifestyle without sacrificing connectivity.



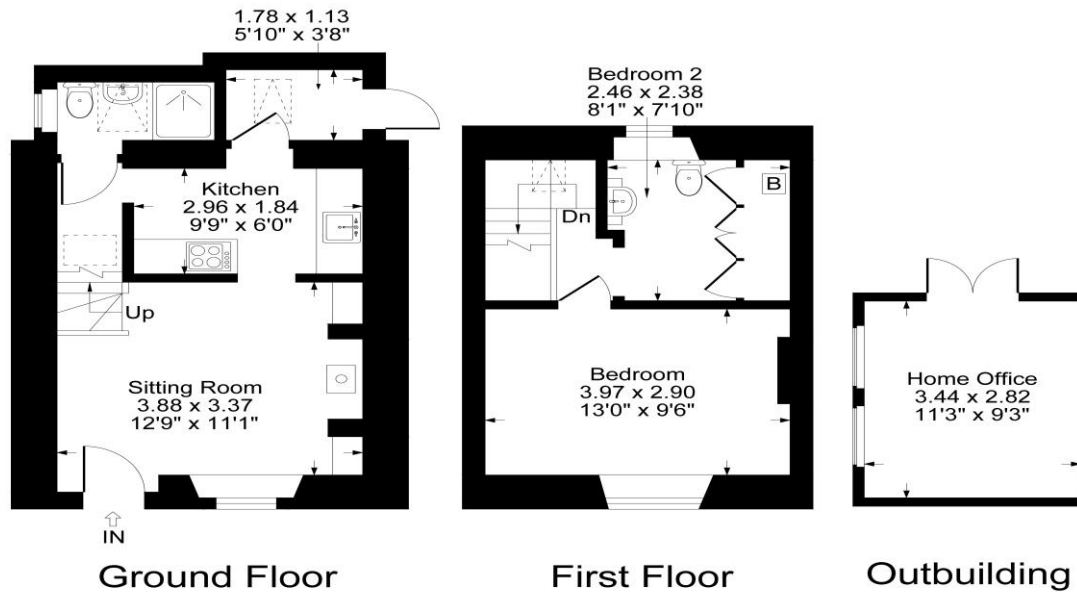


## The Property Briefly Comprises of:

- Semi-Detached Stone Cottage
- Sitting Room
- Kitchen
- Rear Lobby
- Shower Room
- Main Bedroom
- Second Bedroom/Bathroom
- Home Office/Summer House
- Gas Central Heating
- No Onward Chain



Guide Price: £380,000



Approximate Gross Internal Area = 49.60 sq m / 534 sq ft  
 Outbuilding = 09.70 sq m / 104 sq ft  
 Total Area = 59.30 sq m / 638 sq ft  
 Illustration for identification purposes only, measurements are approximate, not to scale.

**Local Authority:** Cherwell District Council

**Council Tax Band:** B

(Subject to change after completion)

**Tenure:** Freehold/Leasehold

**Distances**

- Chipping Norton c. 5 miles
- Banbury c. 8 miles
- Bicester c. 20 miles
- Stratford Upon Avon c. 21 miles
- Oxford c. 25 miles
- Cheltenham c. 31 miles
- Birmingham c. 60 miles
- London c. 81 miles
- Charlbury or Kingham to London, c. 1 hour
- Bicester North or Banbury to London, c. 1 hour

**Buyers Purchase Fee:**

Please note that buyers are required to pay a Purchase Fee of £300 (inc. of VAT) to Mark David on offer acceptance, to process a new transaction.

**Mark David**  
 ESTATE AGENTS  
 Sales • Lettings • Management

9 Market Place, Chipping Norton Oxfordshire  
 OX7 5NA  
 Tel: 01608 644944  
 Email: [chippingnorton@mark-david.co.uk](mailto:chippingnorton@mark-david.co.uk)  
[www.mark-david.co.uk](http://www.mark-david.co.uk)

**Important Notice**

- Mark David Estate Agents for themselves and their clients give notice that:-
1. They are not authorised to make or give representation or warranty in relation to this property, either on their own behalf or on behalf of the Seller. They assume no responsibility for any statement made in these particulars. These particulars do not form part of any offer or contract and must not be relied upon as statements or representations of fact.
  2. Whilst every attempt has been made to ensure the accuracy of the floorplan contained here, measurements of doors, windows, rooms and any other items are approximate and no responsibility is taken for any error, omission, or mis-statement.
  3. All areas, measurements or distances are approximate. The particulars are intended for guidance only and are not necessarily comprehensive. A wide angle lens may have been used in photography. Mark David Estate Agents have not tested appliances or services and it should not be assumed that the property has all necessary planning, building regulation and other consents. Buyers must satisfy themselves with the property by inspection or otherwise.
  4. Reference to any mechanical or electrical equipment does not constitute a representation that such equipment is capable of fulfilling its function and prospective Buyers must make their own enquiries.
  5. They have no responsibility for any expenses or costs incurred by prospective Buyers in inspecting properties which have been sold, let or withdrawn. Applicants are advised to contact the Agent to check availability and any other information of particular importance to them, prior to inspecting the property, particularly if traveling some distance.

