





# Cleveley Road, Enstone, Chipping Norton

£2,500 pcm

3 bedroom detached house to rent

## Description

A detached three bedroom property with detached garage and parking for several vehicles.

Council Tax Band: F (West Oxfordshire District Council)

Deposit: £2,880

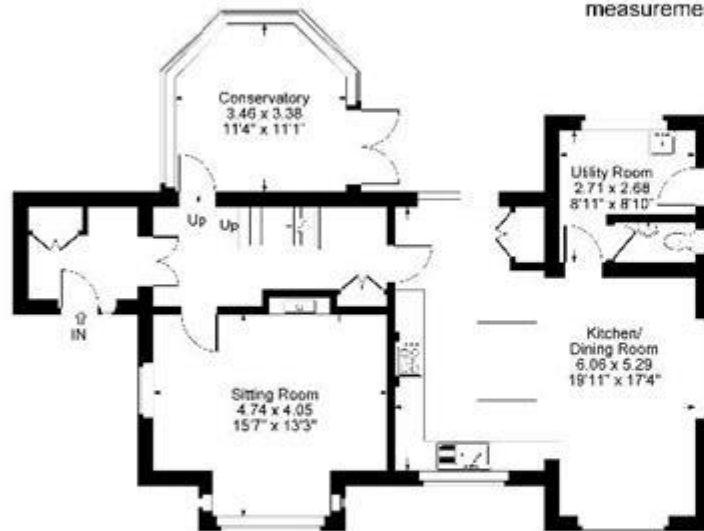
Holding Deposit: £576

Parking options: Driveway, Garage

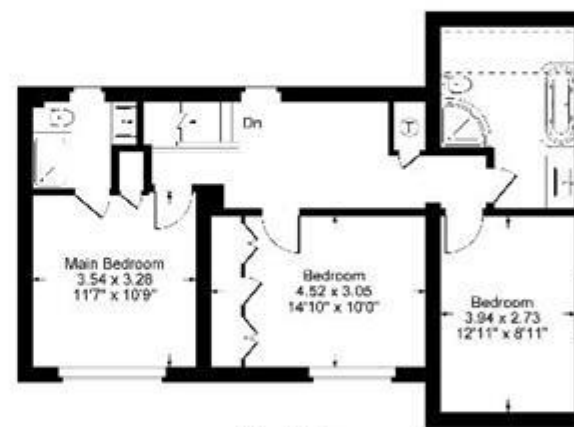




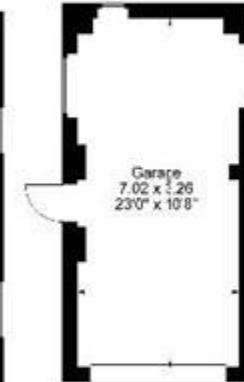
Approximate Gross Internal Area  
Ground Floor = 83.31 sq m / 897 sq ft  
First Floor = 64.78 sq m / 697 sq ft  
Garage = 22.88 sq m / 246 sq ft  
Total Area = 170.97 sq m / 1840 sq ft  
Illustration for identification purposes only,  
measurements are approximate, not to scale.



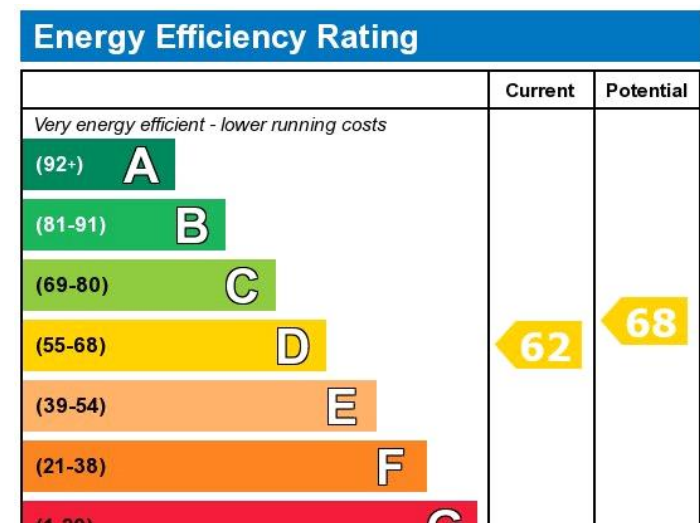
Ground Floor



First Floor



Garage



Viewing by appointment only  
 Mark David - Deddington Office  
 Market House, Market Place, Deddington, Oxfordshire OX15 0SB  
 Tel: 01869 338898 Email: [deddington@mark-david.co.uk](mailto:deddington@mark-david.co.uk) Website: <http://www.mark-david.co.uk>

**Mark David**  
 ESTATE AGENTS  
 Sales • Lettings • Management