



Market Place, Deddington,  
Banbury, Oxfordshire,



## Market Place, Deddington, Banbury, Oxfordshire,

---

A rarely available and individual three bedroom Maisonette located in the heart of Deddington. In need of updating and modernising.

The highly regarded village of Deddington offers many amenities including several shops providing for everyday needs, Post Office, Health & Community Centres, library, hotels and restaurants, recreation ground and the Church of St Peter and St Paul.

Further comprehensive facilities can be found in both Oxford and Banbury whilst access to the M40 motorway can be gained at Junctions 10 or 11. Mainline stations are also available from both Banbury and Bicester.



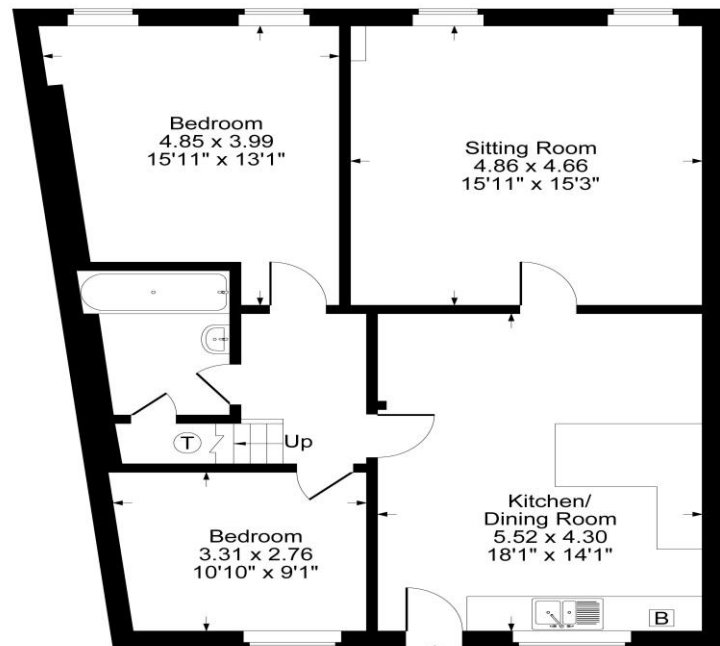


## The Property Briefly Comprises of:

- Rare Opportunity
- Maisonette
- Kitchen/Dining Room
- Sitting Room
- Lobby
- Three Double Bedrooms
- Two Bathrooms
- Gas Central Heating
- Central Village Location
- Overlooking The Market Place
- Long Lease
- Lots of Potential
- IN NEED OF UPDATING AND MODERNISING.

Guide Price: £230,000

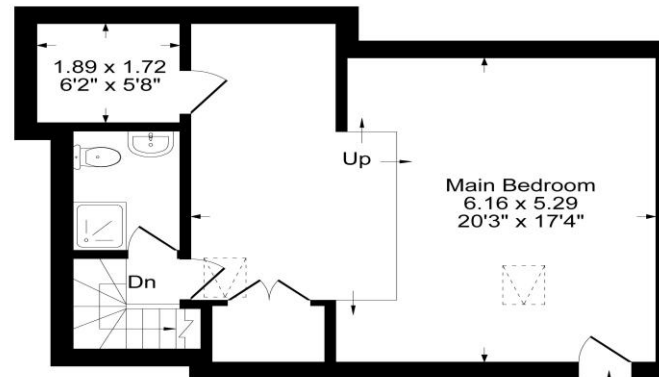




First Floor



Approximate Gross Internal Area  
First Floor = 86.03 sq m / 926 sq ft  
Second Floor = 43.32 sq m / 466 sq ft  
Total Area = 129.35 sq m / 1392 sq ft  
Illustration for identification purposes only,  
measurements are approximate, not to scale.



Second Floor

**Local Authority:**  
Cherwell District Council

**Council Tax Band:** B

(Subject to change after completion)

**Tenure:** Leasehold  
**Length of Lease:** Long Lease

**Distances**  
Banbury c. 6 miles  
Chipping Norton c. 10 miles  
Bicester c. 12 miles  
Oxford c. 18 miles  
Birmingham c. 58 miles  
London c. 73 miles  
M40 access J10 c. 7 miles,  
J11 c. 8 miles  
London via Bicester c. 43 minutes

**Buyers Purchase Fee:**  
Please note that buyers are required to pay a Purchase Fee of £300 (inc. of VAT) to Mark David on offer acceptance, to process a new transaction.

**Mark David**  
ESTATE AGENTS  
Sales • Lettings • Management

Market House, Market Place, Deddington, Oxfordshire  
OX15 0SB  
Tel: 01869 338898  
Email: [deddington@mark-david.co.uk](mailto:deddington@mark-david.co.uk)  
[www.mark-david.co.uk](http://www.mark-david.co.uk)



**Important Notice**

Mark David Estate Agents for themselves and their clients give notice that:-

1. They are not authorised to make or give representation or warranty in relation to this property, either on their own behalf or on behalf of the Seller. They assume no responsibility for any statement made in these particulars. These particulars do not form part of any offer or contract and must not be relied upon as statements or representations of fact.
2. Whilst every attempt has been made to ensure the accuracy of the floorplan contained here, measurements of doors, windows, rooms and any other items are approximate and no responsibility is taken for any error, omission, or mis-statement.
3. All areas, measurements or distances are approximate. The particulars are intended for guidance only and are not necessarily comprehensive. A wide angle lens may have been used in photography. Mark David Estate Agents have not tested appliances or services and it should not be assumed that the property has all necessary planning, building regulation and other consents. Buyers must satisfy themselves with the property by inspection or otherwise.
4. Reference to any mechanical or electrical equipment does not constitute a representation that such equipment is capable of fulfilling its function and prospective Buyers must make their own enquiries.
5. They have no responsibility for any expenses or costs incurred by prospective Buyers in inspecting properties which have been sold, let or withdrawn. Applicants are advised to contact the Agent to check availability and any other information of particular importance to them, prior to inspecting the property, particularly if traveling some distance.