



Lower Tadmarton,  
Oxfordshire

## Lower Tadmarton, Oxfordshire.

A superbly presented detached bungalow set within approximately half an acre of beautifully maintained gardens, backing onto open fields and countryside. The property offers excellent scope for extension or subdivision, with potential for an additional building plot (subject to planning permission).

Tadmarton is a popular and sought-after village set to the West of Banbury surrounded by attractive, undulating countryside not far from the Cotswolds. It is a community village with various activities taking place in the village hall throughout the year, as well as a variety of weekly/monthly club gatherings. The village has a thriving public house and the St Nicolas parish church, as well as footpaths and bridleways. There are shops and schools at Bloxham and a wider range of facilities at the nearby market town of Banbury. Banbury also offers access to the M40 Motorway (Junction 11), with a mainline rail station to London Marylebone (from 55 minutes peak time), Oxford and Birmingham.

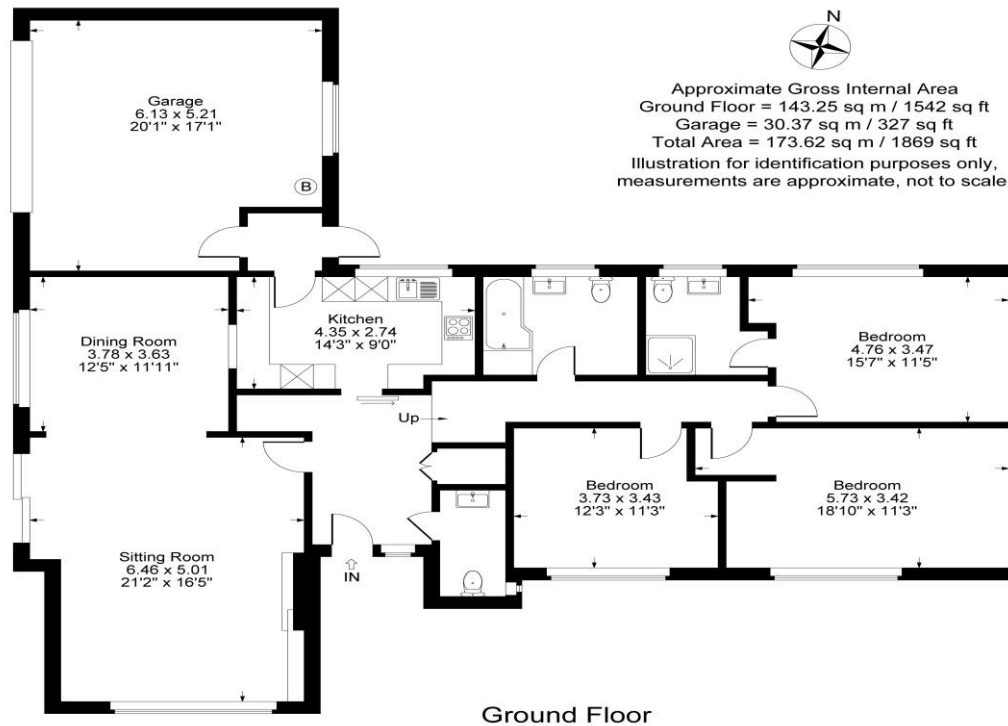




## The Property Briefly Comprises:

- Detached Bungalow
- Long Driveway
- Entrance Hall
- Cloakroom
- Modern Kitchen
- Dining Room
- Sitting Room
- Principal Bedroom with En-Suite Shower Room
- Two Further Double Bedrooms
- Modern Family Bathroom
- Set in Approximately Half an Acre of Enclosed Gardens
- Integral Double Garage

Guide Price: £750,000



**Local Authority:** Cherwell District Council

**Council Tax Band:** F

(Subject to change after completion)

**Tenure:** Freehold

**Distances**

- Bloxham c. 3 miles
- Banbury c. 5 miles
- Deddington c. 7 miles
- Shipston-on-Sour c. 9 miles
- Birmingham c. 56 miles
- London c. 83 miles
- M40 J11 c. 7 miles
- Banbury to London Marylebone c. 1 hour

**Buyers Purchase Fee:**

Please note that buyers are required to pay a Purchase Fee of £300 (inc. of VAT) to Mark David on offer acceptance, to process a new transaction.

**Mark David**  
 ESTATE AGENTS  
 Sales • Lettings • Management

Market House, Market Place, Deddington, Oxfordshire  
 OX15 0SB  
 Tel: 01869 338898  
 Email: deddington@mark-david.co.uk  
[www.mark-david.co.uk](http://www.mark-david.co.uk)

**Important Notice**

Mark David Estate Agents for themselves and their clients give notice that:-

1. They are not authorised to make or give representation or warranty in relation to this property, either on their own behalf or on behalf of the Seller. They assume no responsibility for any statement made in these particulars. These particulars do not form part of any offer or contract and must not be relied upon as statements or representations of fact.
2. Whilst every attempt has been made to ensure the accuracy of the floorplan contained here, measurements of doors, windows, rooms and any other items are approximate and no responsibility is taken for any error, omission, or mis-statement.
3. All areas, measurements or distances are approximate. The particulars are intended for guidance only and are not necessarily comprehensive. A wide angle lens may have been used in photography. Mark David Estate Agents have not tested appliances or services and it should not be assumed that the property has all necessary planning, building regulation and other consents. Buyers must satisfy themselves with the property by inspection or otherwise.
4. Reference to any mechanical or electrical equipment does not constitute a representation that such equipment is capable of fulfilling its function and prospective Buyers must make their own enquiries.
5. They have no responsibility for any expenses or costs incurred by prospective Buyers in inspecting properties which have been sold, let or withdrawn. Applicants are advised to contact the Agent to check availability and any other information of particular importance to them, prior to inspecting the property, particularly if traveling some distance.

