



Enstone,  
Oxfordshire



## Enstone, Oxfordshire

---

A spacious and well presented four bedroom semi detached stone built cottage conveniently located between Chipping Norton and Woodstock in this popular Cotswold village. The property offers excellent living space and has an added benefit of four parking spaces and a 100ft rear west facing garden.

Built in 1729 with later additions, this well presented and spacious stone built house has four good sized bedrooms, large sunny facing rear garden and off road parking for four cars.

This pretty village lies to the north west of Woodstock and is surrounded by delightful countryside with an extensive network of footpaths and bridleways. The village comprises mainly period properties and benefits from two public houses, a village shop and Post Office and a primary school. Approximately 3 miles distant is the mainline station at Charlbury which offers a popular service to London Paddington. The charming town of Woodstock offers a greater selection of day to day shopping, public houses, cafes and restaurants with the historic City of Oxford providing a more comprehensive range of shopping and leisure facilities





## The Property Briefly Comprises of:

- Semi Detached Cottage
- Off Street Parking for Four Cars
- Sitting Room with Woodburning Stove
- Study
- Kitchen/Dining Room
- Utility
- Cloakroom
- Master Bedroom with En-suite Shower Room
- Three Further Double Bedrooms
- Family Bathroom
- Large Sunny Garden

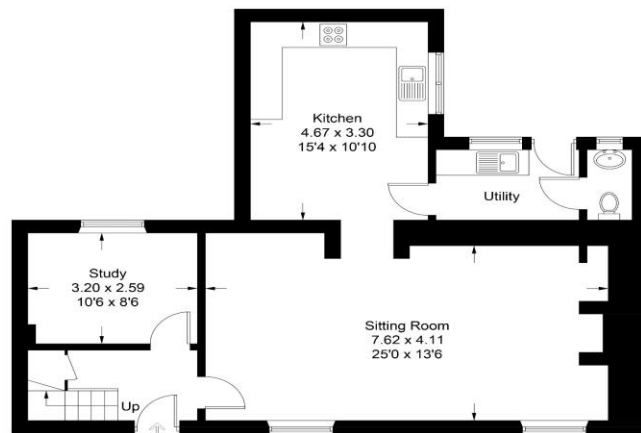


Guide Price: £585,000

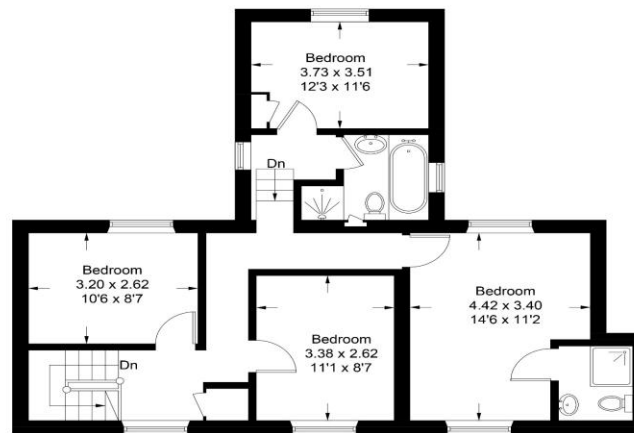




Approximate Gross Internal Area = 137.0 sq m / 1475 sq ft



Ground Floor



First Floor

Illustration for identification purposes only, measurements are approximate, not to scale. Fourlabs.co © (ID1207333)

**Local Authority:**  
West Oxfordshire District Council

**Council Tax Band:** E  
(Subject to change after completion)

**Tenure:** Freehold

**Distances**  
Chipping Norton c. 5 Miles  
Woodstock c.7 Miles  
Oxford c. 15 Miles  
Deddington c. 10 Miles  
Banbury c. 12 Miles  
Cheltenham c. 28 miles  
Birmingham c. 50 miles  
London c. 70 miles  
Charlbury or Kingham to London, c. 1 hour  
Bicester North or Banbury to London, c. 1 hour

**Buyers Purchase Fee:**  
Please note that buyers are required to pay a Purchase Fee of £300 (inc. of VAT) to Mark David on offer acceptance, to process a new transaction.

**Mark David**  
ESTATE AGENTS  
Sales • Lettings • Management

9 Market Place, Chipping Norton Oxfordshire  
OX7 5NA  
Tel: 01608 644944  
Email: [chippingnorton@mark-david.co.uk](mailto:chippingnorton@mark-david.co.uk)  
[www.mark-david.co.uk](http://www.mark-david.co.uk)



**Important Notice**

Mark David Estate Agents for themselves and their clients give notice that:-

1. They are not authorised to make or give representation or warranty in relation to this property, either on their own behalf or on behalf of the Seller. They assume no responsibility for any statement made in these particulars. These particulars do not form part of any offer or contract and must not be relied upon as statements or representations of fact.
2. Whilst every attempt has been made to ensure the accuracy of the floorplan contained here, measurements of doors, windows, rooms and any other items are approximate and no responsibility is taken for any error, omission, or mis-statement.
3. All areas, measurements or distances are approximate. The particulars are intended for guidance only and are not necessarily comprehensive. A wide angle lens may have been used in photography. Mark David Estate Agents have not tested appliances or services and it should not be assumed that the property has all necessary planning, building regulation and other consents. Buyers must satisfy themselves with the property by inspection or otherwise.
4. Reference to any mechanical or electrical equipment does not constitute a representation that such equipment is capable of fulfilling its function and prospective Buyers must make their own enquiries.
5. They have no responsibility for any expenses or costs incurred by prospective Buyers in inspecting properties which have been sold, let or withdrawn. Applicants are advised to contact the Agent to check availability and any other information of particular importance to them, prior to inspecting the property, particularly if traveling some distance.