



Sandford St Martin,
Oxfordshire

Sandford St Martin, Oxfordshire.

An extremely attractive three bedroom stone house located in this highly sought after and popular village.

Sandford St Martin is a charming village made up of attractive traditional Cotswold stone houses and cottages.

The nearby towns of Chipping Norton, Charlbury, and Woodstock provide excellent local facilities, while the city of Oxford, with its outstanding schooling, is within easy reach.

The property is well located for communications, with easy access to the A44 and M40. Regular train services to London Paddington from Charlbury take 70 minutes. Schooling in the area is excellent with a primary school in Great Tew. Nearby schools include Tudor Hall School, Bloxham School, Kitebrook School, Sibford School in addition to a wide range of private and state schools within Oxford such as The Dragon, Summer Fields, St. Edwards, Magdalen College and Headington Girls as well as Radley near Abingdon.

Soho Farmhouse, Estelle Manor and Daylesford Organic Farm shop are all within easy reach.



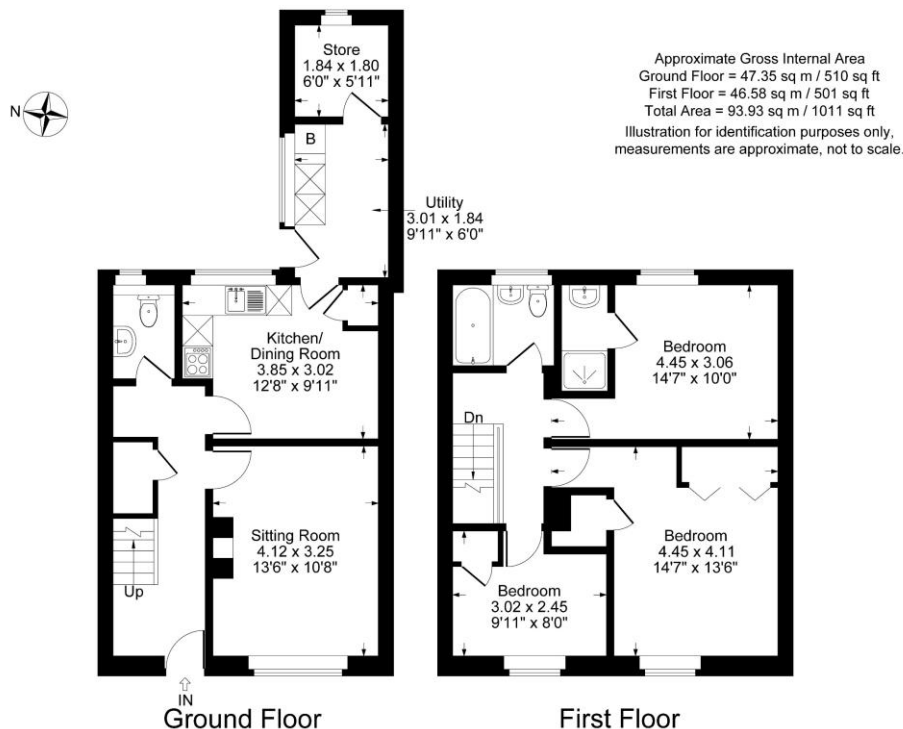


The Property Briefly Comprises of:

- Entrance Hall
- Cloakroom
- Sitting Room
- Kitchen/Dining Room
- Utility
- Master Bedroom with En-Suite
- Two Further Bedrooms
- Family Bathroom
- Own Enclosed Rear Garden
- Own Parking Space
- Countryside views
- Off Street Parking
- Oil Central Heating
- Double Glazed Windows



Guide Price: £350,000



Local Authority
West Oxfordshire District Council

Council Tax Band: D
(Subject to change after completion)

Tenure: Freehold

Distances
Charlbury c. 7 miles
Woodstock c. 8 miles
Chipping Norton c. 8 miles
Banbury c. 13 miles
Oxford c. 17 miles
London c. 70 miles
Oxford to London Paddington c. 1 hour.
Charlbury to London Paddington 1 hour 20 mins

Buyers Purchase Fee:
Please note that buyers are required to pay a Purchase Fee of £300 (inc. of VAT) to Mark David Estate Agents Ltd on offer acceptance, to process a new transaction.

Mark David
ESTATE AGENTS
Sales • Lettings • Management

Market House, Market Place, Deddington, Oxfordshire
OX15 0SB
Tel: 01869 338898
Email: deddington@mark-david.co.uk
www.mark-david.co.uk



Important Notice

Mark David Estate Agents for themselves and their clients give notice that:-

1. They are not authorised to make or give representation or warranty in relation to this property, either on their own behalf or on behalf of the Seller. They assume no responsibility for any statement made in these particulars. These particulars do not form part of any offer or contract and must not be relied upon as statements or representations of fact.
2. Whilst every attempt has been made to ensure the accuracy of the floorplan contained here, measurements of doors, windows, rooms and any other items are approximate and no responsibility is taken for any error, omission, or mis-statement.
3. All areas, measurements or distances are approximate. The particulars are intended for guidance only and are not necessarily comprehensive. A wide angle lens may have been used in photography. Mark David Estate Agents have not tested appliances or services and it should not be assumed that the property has all necessary planning, building regulation and other consents. Buyers must satisfy themselves with the property by inspection or otherwise.
4. Reference to any mechanical or electrical equipment does not constitute a representation that such equipment is capable of fulfilling its function and prospective Buyers must make their own enquiries.
5. They have no responsibility for any expenses or costs incurred by prospective Buyers in inspecting properties which have been sold, let or withdrawn. Applicants are advised to contact the Agent to check availability and any other information of particular importance to them, prior to inspecting the property, particularly if traveling some distance.