



Brackley,
Northamptonshire

Brackley, Northamptonshire.

A fabulously spacious and beautifully presented detached, family home with a large level garden, fantastic reception space and plentiful parking.

Brackley is a market town in Northamptonshire, England, on the borders with Oxfordshire and Buckinghamshire. It is an historic market town which was built on the intersecting trade routes between London, Birmingham and the Midlands and Cambridge and Oxford. Brackley is close to Silverstone and home to the Mercedes AMG Petronas F1 Team.

There are a several public houses, restaurants and cafes, supermarkets such as Tesco, Waitrose and also Co-Op. There is a post office as well as primary schools, secondary schools and Magdalen College.



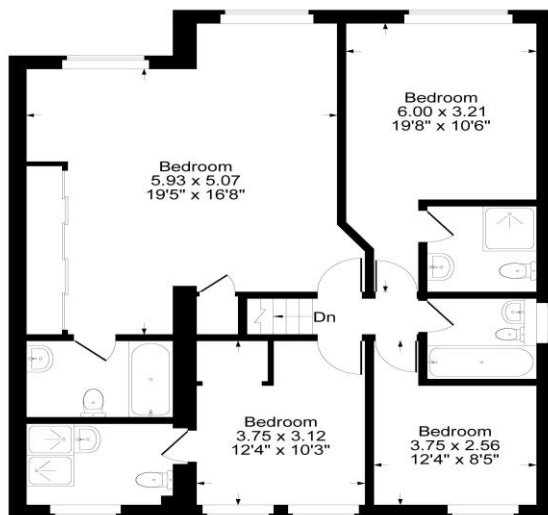
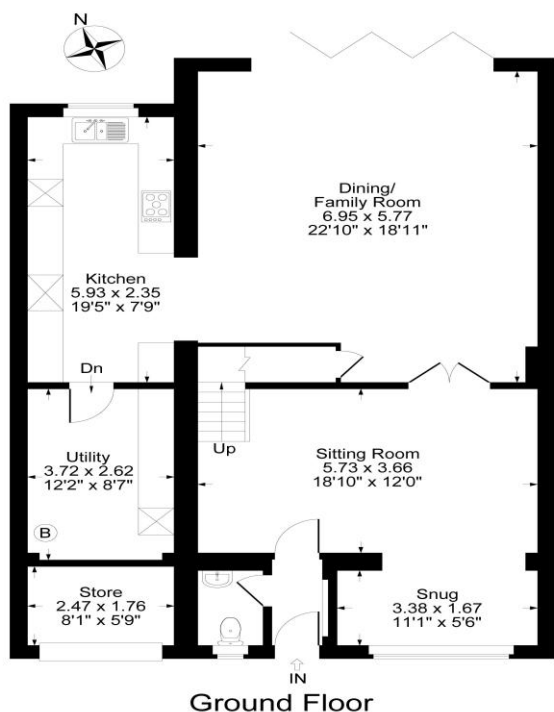


The Property Briefly Comprises of:

- Detached Residence
- Entrance Hall
- Cloakroom
- Sitting Room
- Snug
- Dining/Family Room
- Kitchen
- Utility Room
- Store Room
- Master Bedroom with En-Suite Bathroom and Built-in Wardrobes
- Two Further Bedrooms with En-suite Shower Rooms
- Fourth Bedroom
- Family Bathroom
- Enclosed Rear Garden
- Own Driveway Providing Off Road Parking



Guide Price: £525,000



Approximate Gross Internal Area
 Ground Floor = 107.41 sq m / 1156 sq ft
 First Floor = 89.60 sq m / 965 sq ft
 Total Area = 197.01 sq m / 2121 sq ft
 Illustration for identification purposes only,
 measurements are approximate, not to scale.

Local Authority:
 South Northamptonshire Council

Council Tax Band: D
 (Subject to change after completion)

Tenure: Freehold

Distances
 Banbury c. 13 miles
 Bicester c. 11 miles
 Oxford c. 19 miles
 Northampton c. 22 miles
 Birmingham c. 60 miles
 M40 J10 c. 7 miles
 Bicester – London Marylebone c. 1 hour

Buyers Purchase Fee:
 Please note that buyers are required to pay a Purchase Fee of £300 (inc. of VAT) to Mark David Estate Agents Ltd on offer acceptance, to process a new transaction.

Mark David
 ESTATE AGENTS
 Sales • Lettings • Management

Market House, Market Place, Deddington, Oxfordshire
 OX15 0SB
 Tel: 01869 338898
 Email: deddington@mark-david.co.uk
www.mark-david.co.uk



Important Notice

Mark David Estate Agents for themselves and their clients give notice that:-

1. They are not authorised to make or give representation or warranty in relation to this property, either on their own behalf or on behalf of the Seller. They assume no responsibility for any statement made in these particulars. These particulars do not form part of any offer or contract and must not be relied upon as statements or representations of fact.
2. Whilst every attempt has been made to ensure the accuracy of the floorplan contained here, measurements of doors, windows, rooms and any other items are approximate and no responsibility is taken for any error, omission, or mis-statement.
3. All areas, measurements or distances are approximate. The particulars are intended for guidance only and are not necessarily comprehensive. A wide angle lens may have been used in photography. Mark David Estate Agents have not tested appliances or services and it should not be assumed that the property has all necessary planning, building regulation and other consents. Buyers must satisfy themselves with the property by inspection or otherwise.
4. Reference to any mechanical or electrical equipment does not constitute a representation that such equipment is capable of fulfilling its function and prospective Buyers must make their own enquiries.
5. They have no responsibility for any expenses or costs incurred by prospective Buyers in inspecting properties which have been sold, let or withdrawn. Applicants are advised to contact the Agent to check availability and any other information of particular importance to them, prior to inspecting the property, particularly if traveling some distance.