



Wheelwright Gardens,
Long Compton

Wheelwright Gardens, Long Compton.

An individual detached stone residence set on a corner position offering over 1700 sq. ft of well-proportioned accommodation into private garden and beautiful views of countryside to all aspects.

The lovely village of Long Compton is located in the attractive rolling South Warwickshire countryside, on the Warwickshire/ Oxfordshire borders. The village is surrounded by delightful undulating countryside designated in the main as a Conservation Area and within the Cotswold Area of Outstanding Natural Beauty. The village is conveniently situated for easy access to both Shipston-on-Stour and Chipping Norton.

The area is well served by a network of main roads providing access to the larger centres of Oxford, Banbury and Stratford-upon-Avon all of which provide first class educational establishments in the state and public sectors, as well as providing a wide range of cultural and leisure facilities.

The M40 (J11) at Banbury provides access north to Birmingham and the Midlands and south to Oxford and London. There are mainline stations at Banbury and Moreton-in-Marsh with regular rail services to London Marylebone and Paddington



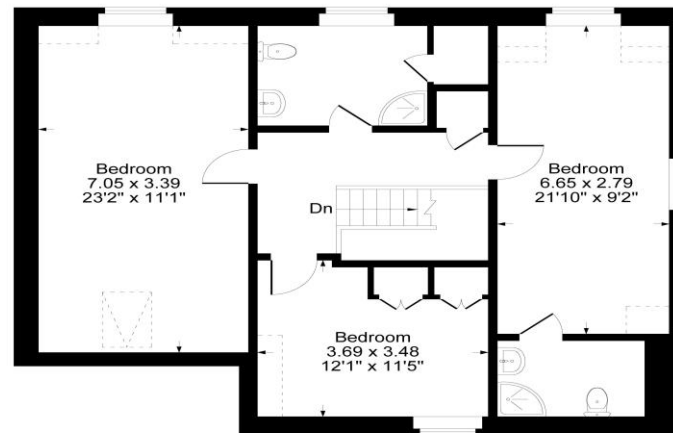
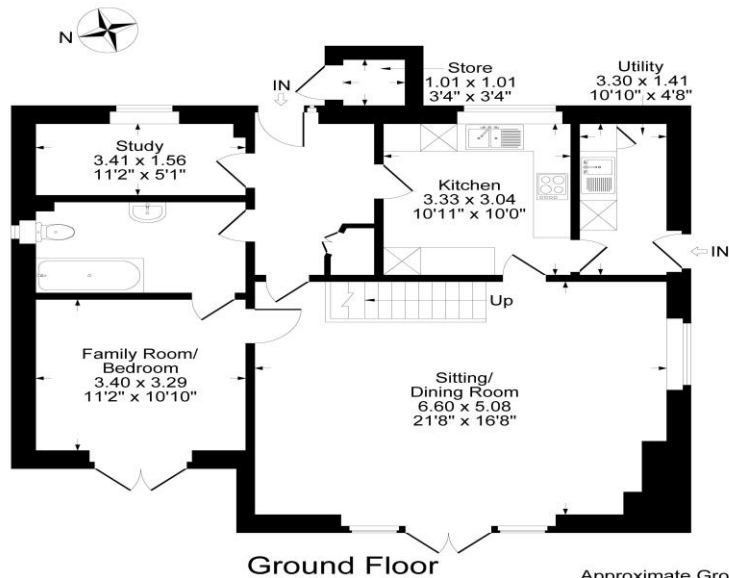


The Property Briefly Comprises of:

- Detached Stone Residence
- Entrance Hall
- Study
- Kitchen
- Utility Room
- Sitting/Dining Room
- Ground Floor Bathroom
- Family Room/Bedroom
- Master Bedroom with En-Suite
- Two Further Double Bedrooms
- Family Bathroom
- Private Rear Garden
- Off Street Parking
- Air Source Heating
- Solar Panels
- Triple Glazing



Guide Price: £695,000



Ground Floor

First Floor

Approximate Gross Internal Area
 Ground Floor = 83.83 sq m / 902 sq ft
 First Floor = 82.42 sq m / 887 sq ft
 Total Area = 166.25 sq m / 1789 sq ft
 Illustration for identification purposes only,
 measurements are approximate, not to scale.

Local Authority:
 Stratford-On-Avon

Council Tax Band: F

(Subject to change after completion)

Tenure

Freehold

Distances

Shipston on Stour c. 5 miles
 Chipping Norton c. 5 miles
 Banbury c. 13 miles
 Warwick c. 22 miles
 Leamington Spa c. 23 miles
 Birmingham c. 51 miles
 London c. 78 miles
 Moreton-in-Marsh to London,
 c. 90 minutes

Mark David
 ESTATE AGENTS
 Sales • Lettings • Management

9 Market Place, Chipping Norton Oxfordshire
 OX7 5NA
 Tel: 01608 644944
 Email: chippingnorton@mark-david.co.uk
www.mark-david.co.uk

Important Notice

Mark David Estate Agents for themselves and their clients give notice that:-

1. They are not authorised to make or give representation or warranty in relation to this property, either on their own behalf or on behalf of the Seller. They assume no responsibility for any statement made in these particulars. These particulars do not form part of any offer or contract and must not be relied upon as statements or representations of fact.
2. Whilst every attempt has been made to ensure the accuracy of the floorplan contained here, measurements of doors, windows, rooms and any other items are approximate and no responsibility is taken for any error, omission, or mis-statement.
3. All areas, measurements or distances are approximate. The particulars are intended for guidance only and are not necessarily comprehensive. A wide angle lens may have been used in photography. Mark David Estate Agents have not tested appliances or services and it should not be assumed that the property has all necessary planning, building regulation and other consents. Buyers must satisfy themselves with the property by inspection or otherwise.
4. Reference to any mechanical or electrical equipment does not constitute a representation that such equipment is capable of fulfilling its function and prospective Buyers must make their own enquiries.
5. They have no responsibility for any expenses or costs incurred by prospective Buyers in inspecting properties which have been sold, let or withdrawn. Applicants are advised to contact the Agent to check availability and any other information of particular importance to them, prior to inspecting the property, particularly if traveling some distance.

