



Enstone, Chipping Norton
Oxfordshire

Enstone, Chipping Norton, Oxfordshire

This 1950's semi detached house is in need of modernisation, situated on a good sized plot, with front and rear gardens, off road parking and a single garage.

This pretty village lies to the north west of Woodstock and is surrounded by delightful countryside with an extensive network of footpaths and bridleways. The village comprises mainly period properties and benefits from two public houses, a village shop and Post Office and a primary school. Approximately 3 miles distant is the mainline station at Charlbury which offers a popular service to London Paddington.

The charming town of Woodstock offers a greater selection of day to day shopping, public houses, cafes and restaurants with the historic City of Oxford providing a more comprehensive range of shopping and leisure facilities.





The Property Briefly Comprises of:

- Semi-Detached Property
- Entrance Hall
- Dual Aspect Sitting Room
- Dining Room
- Kitchen
- Utility
- Ground Floor Shower Room
- Three Double Bedrooms
- Family Bathroom
- Enclosed Rear Garden
- Single Garage
- Off Road Parking
- L.P.G Central Heating
- No Chain



Guide Price: £350,000



Approximate Gross Internal Area = 100.4 sq m / 1081 sq ft
Garage = 16.0 sq m / 172 sq ft
Total = 116.4 sq m / 1253 sq ft

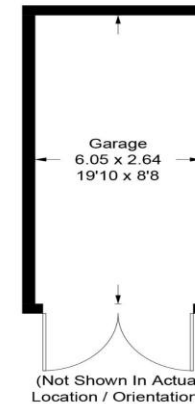
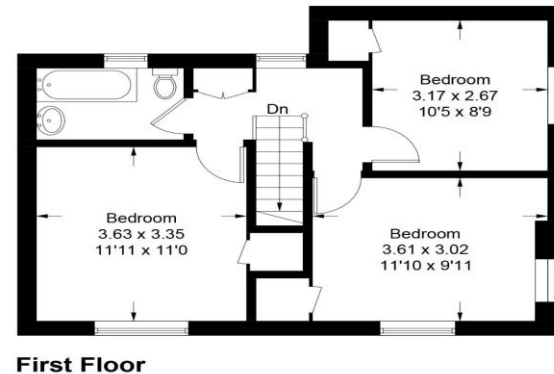
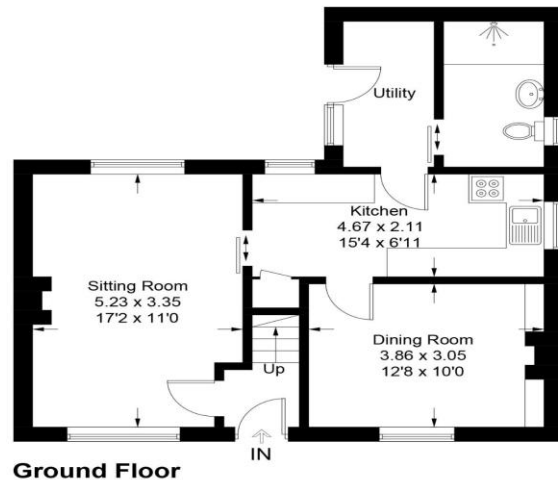


Illustration for identification purposes only, measurements are approximate, not to scale. Fourlabs.co © (ID1178537)

Local Authority:
West Oxfordshire District Council

Council Tax Band: C

(Subject to change after completion)

Tenure: Freehold

Distances
Chipping Norton c. 5 Miles
Woodstock c.7 Miles
Oxford c. 15 Miles
Deddington c. 10 Miles
Banbury c. 12 Miles
Cheltenham c. 28 miles
Birmingham c. 50 miles
London c. 70 miles
Charlbury or Kingham to London,
c. 1 hour
Bicester North or Banbury to London,
c. 1 hour

Mark David
ESTATE AGENTS
Sales • Lettings • Management

9 Market Place, Chipping Norton Oxfordshire
OX7 5NA
Tel: 01608 644944
Email: chippingnorton@mark-david.co.uk
www.mark-david.co.uk

Important Notice

Mark David Estate Agents for themselves and their clients give notice that:-

1. They are not authorised to make or give representation or warranty in relation to this property, either on their own behalf or on behalf of the Seller. They assume no responsibility for any statement made in these particulars. These particulars do not form part of any offer or contract and must not be relied upon as statements or representations of fact.
2. Whilst every attempt has been made to ensure the accuracy of the floorplan contained here, measurements of doors, windows, rooms and any other items are approximate and no responsibility is taken for any error, omission, or mis-statement.
3. All areas, measurements or distances are approximate. The particulars are intended for guidance only and are not necessarily comprehensive. A wide angle lens may have been used in photography. Mark David Estate Agents have not tested appliances or services and it should not be assumed that the property has all necessary planning, building regulation and other consents. Buyers must satisfy themselves with the property by inspection or otherwise.
4. Reference to any mechanical or electrical equipment does not constitute a representation that such equipment is capable of fulfilling its function and prospective Buyers must make their own enquiries.
5. They have no responsibility for any expenses or costs incurred by prospective Buyers in inspecting properties which have been sold, let or withdrawn. Applicants are advised to contact the Agent to check availability and any other information of particular importance to them, prior to inspecting the property, particularly if traveling some distance.

