



Cropredy,
Oxfordshire.

Cropredy, Oxfordshire.

This exceptional five bedroom family home, sits on a much larger than average plot, in a cul-de-sac position, within the peaceful village of Cropredy. The accommodation is extremely well proportioned and includes a modern fitted kitchen and beautiful master en-suite shower room.

It is a lively, well served village with a good range of amenities including: two pubs, two Cafes, Shop, Post Office, Doctors Surgery and Dispensary, active Village Hall, Primary School, Church, and Chapel, and has a good array of sports clubs; Cricket, Football, Tennis, Canoe, and Judo.

Cropredy is some 4 miles north of Banbury, the nearest town, where a wide range of amenities can be found including supermarkets (M&S, Waitrose, Sainsburys, Tesco, Morrisons, Lidl and Aldi), shopping, restaurants, and cafes, ten pin bowling, sports centre, gyms, and cinemas.

For commuters, Banbury has rail links to London, Oxford, Bicester, and Birmingham and is on J11 of the M40 motorway.

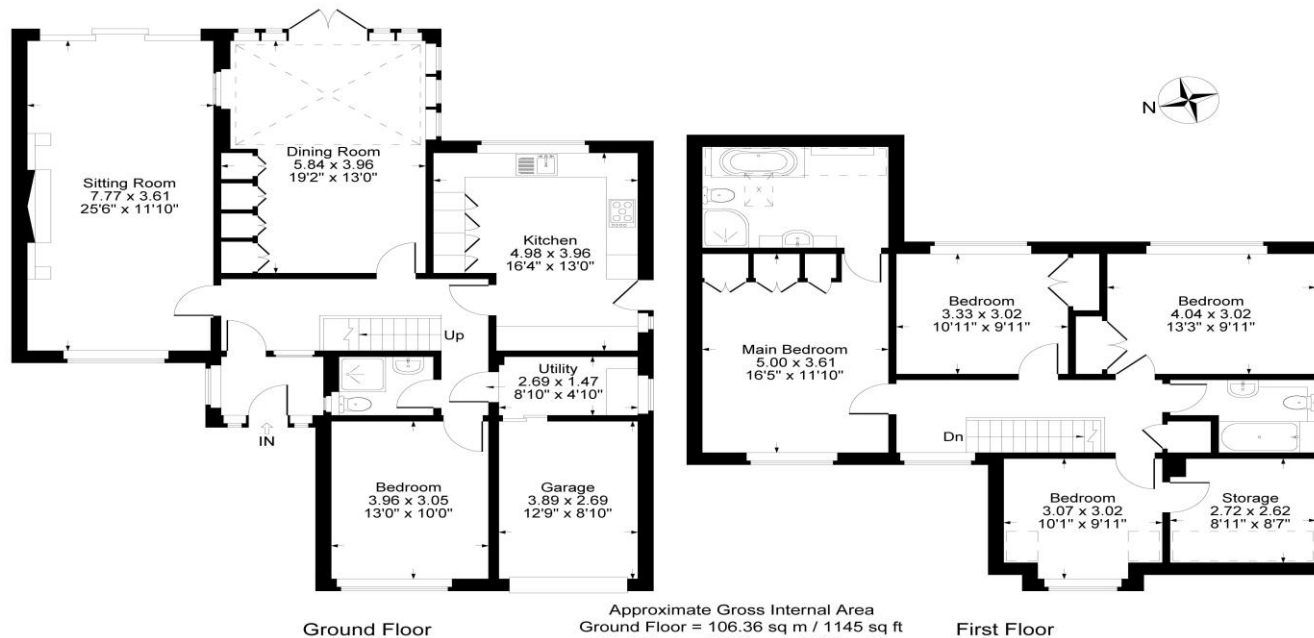




The Property Briefly Comprises of:

- Dual Aspect Living Room
- Superb Cul-De-Sac Position
- Popular North Oxfordshire Village
- Five Bedrooms – Including a Ground Floor Double Bedroom with Adjacent Shower Room
- Two Enormous Reception Rooms
- Single Garage with Electric & Lighting
- Extensive Driveway Parking
- Modern UPVC Double Glazing
- Oil Fired Central Heating
- Larger than Average Garden
- Viewing Highly Recommended

OIEO: £790,000



Local Authority:
Cherwell District Council

Council Tax Band: F

(Subject to change after completion)

Tenure: Freehold

Distances

Banbury c. 6 miles
 Bicester c. 22 miles
 Stratford Upon Avon c. 32 miles
 Oxford c. 35 miles
 Birmingham c. 46 miles
 London c. 83 miles
 M40 Access c. 6 miles
 London via Bicester c. 43 minutes

Mark David
 ESTATE AGENTS
 Sales • Lettings • Management

Market House, Market Place, Deddington, Oxfordshire
 OX15 0SB
 Tel: 01869 338898
 Email: deddington@mark-david.co.uk
www.mark-david.co.uk

Important Notice

Mark David Estate Agents for themselves and their clients give notice that:-

1. They are not authorised to make or give representation or warranty in relation to this property, either on their own behalf or on behalf of the Seller. They assume no responsibility for any statement made in these particulars. These particulars do not form part of any offer or contract and must not be relied upon as statements or representations of fact.
2. Whilst every attempt has been made to ensure the accuracy of the floorplan contained here, measurements of doors, windows, rooms and any other items are approximate and no responsibility is taken for any error, omission, or mis-statement.
3. All areas, measurements or distances are approximate. The particulars are intended for guidance only and are not necessarily comprehensive. A wide angle lens may have been used in photography. Mark David Estate Agents have not tested appliances or services and it should not be assumed that the property has all necessary planning, building regulation and other consents. Buyers must satisfy themselves with the property by inspection or otherwise.
4. Reference to any mechanical or electrical equipment does not constitute a representation that such equipment is capable of fulfilling its function and prospective Buyers must make their own enquiries.
5. They have no responsibility for any expenses or costs incurred by prospective Buyers in inspecting properties which have been sold, let or withdrawn. Applicants are advised to contact the Agent to check availability and any other information of particular importance to them, prior to inspecting the property, particularly if traveling some distance.

