



Adderbury,
Banbury, Oxfordshire

Adderbury, Banbury, Oxfordshire

Set adjacent to open fields, an impressive, detached family home offering spacious accommodation on three levels, featuring an open-plan kitchen, large living room, four bedrooms, two en-suites, detached garage, and enclosed garden.

The picturesque village of Adderbury is a well-known Oxfordshire location celebrated for its blend of historic charm and modern convenience. Families are particularly drawn to this area due its excellent local schooling options, including a well-regarded primary school within the village and the Warriner School in nearby Bloxham. In addition, the train stations in close-by Banbury, King's Sutton, and Bicester provide regular services to London, with journey times of approximately one hour.



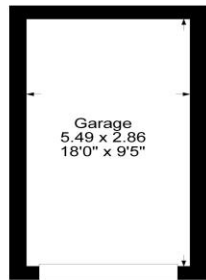


The Property Briefly Comprises of:

- Spacious detached home in Adderbury
- Extensive accommodation set out over three levels
- Open-plan dining kitchen for entertaining
- Large living room for relaxation or work
- Principal bedroom with en-suite shower
- Second-floor bedroom with en-suite
- Detached garage and enclosed garden
- Excellent local schools and transport links



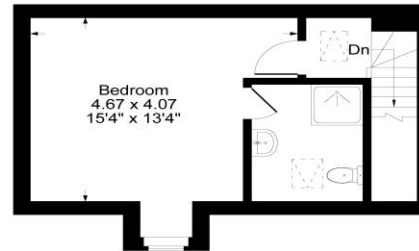
Guide Price: £650,000



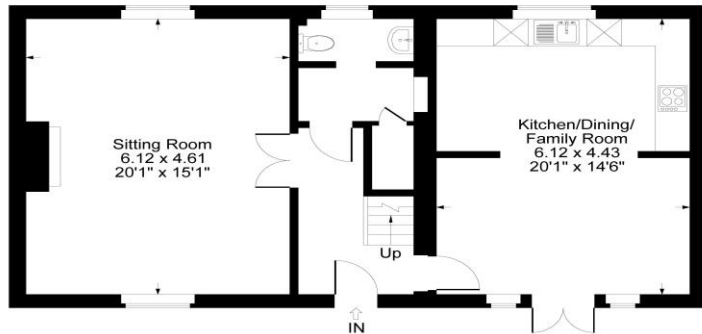
Garage



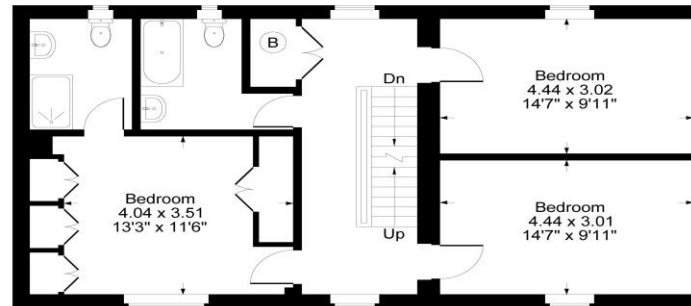
Approximate Gross Internal Area
 Ground Floor = 71.05 sq m / 765 sq ft
 First Floor = 71.05 sq m / 765 sq ft
 Second Floor = 28.24 sq m / 304 sq ft
 Garage = 15.70 sq m / 169 sq ft
 Total Area = 186.04 sq m / 2003 sq ft
 Illustration for identification purposes only,
 measurements are approximate, not to scale.



Second Floor



Ground Floor



First Floor

Local Authority:
 Cherwell District Council

Council Tax Band: F

(Subject to change after completion)

Tenure: Freehold

Distances

Deddington c. 3 miles
 Banbury c. 4 miles
 Chipping Norton c. 13 miles
 Oxford c. 21 miles
 Birmingham c. 55 miles
 London c. 74 miles
 M40 Access c. 5 Miles
 London via Bicester c. 43 minutes

Mark David
 ESTATE AGENTS
 Sales • Lettings • Management

Market House, Market Place, Deddington, Oxfordshire
 OX15 0SB
 Tel: 01869 338898
 Email: deddington@mark-david.co.uk
www.mark-david.co.uk

Important Notice

Mark David Estate Agents for themselves and their clients give notice that:-

1. They are not authorised to make or give representation or warranty in relation to this property, either on their own behalf or on behalf of the Seller. They assume no responsibility for any statement made in these particulars. These particulars do not form part of any offer or contract and must not be relied upon as statements or representations of fact.
2. Whilst every attempt has been made to ensure the accuracy of the floorplan contained here, measurements of doors, windows, rooms and any other items are approximate and no responsibility is taken for any error, omission, or mis-statement.
3. All areas, measurements or distances are approximate. The particulars are intended for guidance only and are not necessarily comprehensive. A wide angle lens may have been used in photography. Mark David Estate Agents have not tested appliances or services and it should not be assumed that the property has all necessary planning, building regulation and other consents. Buyers must satisfy themselves with the property by inspection or otherwise.
4. Reference to any mechanical or electrical equipment does not constitute a representation that such equipment is capable of fulfilling its function and prospective Buyers must make their own enquiries.
5. They have no responsibility for any expenses or costs incurred by prospective Buyers in inspecting properties which have been sold, let or withdrawn. Applicants are advised to contact the Agent to check availability and any other information of particular importance to them, prior to inspecting the property, particularly if traveling some distance.

