



South Newington
Oxfordshire

South Newington, Oxfordshire

A Unique and Rarely Available Three Bedroom Semi Detached House with Parking and Secluded Gardens Siding on to a Nature Reserve.

South Newington is a popular Conservation Area village situated between the market towns of Chipping Norton and Banbury in undulating Oxfordshire countryside, close to the north Cotswolds. Facilities within the village include a parish church, fine-dining pub, children's play area and well-utilised village hall. Further local facilities can be found at Bloxham, just 2 miles away and offers a wide range of amenities including shops, three public houses, a parish church, post office, doctors' and dentists' surgeries. There are both primary and secondary schooling with 6th form and the world renowned Bloxham (Boys and Girls) and Tudor Hall (Girls) boarding schools. Soho Farmhouse is approximately 5 miles away.

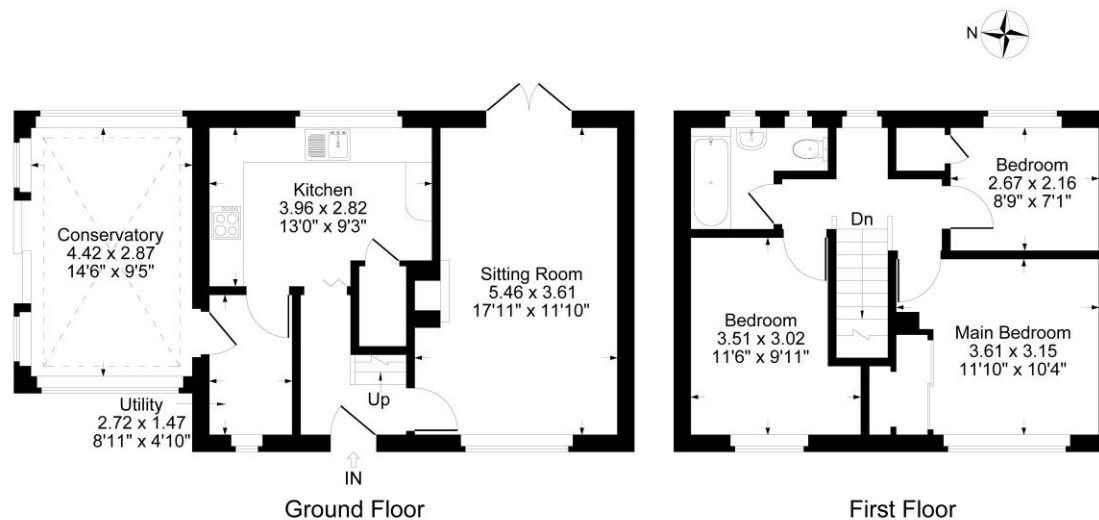




The Property Briefly Comprises of:

- Sitting Room
- Kitchen
- Utility Room
- Conservatory
- Three Bedrooms
- Bathroom
- Parking for Several Vehicles
- Gardens
- Garden Pond
- The Property Benefits from Oil Central Heating and Double Glazed Windows

Guide Price: £350,000



Local Authority
Cherwell District Council

Council Tax Band: D

(Subject to change after completion)

Tenure

Freehold

Distances

Banbury c. 6 miles
Chipping Norton c. 7 miles
Oxford c. 23 miles
Birmingham c. 58 miles
London c. 78 miles
Banbury M40 Junction 11 c. 10 miles
Banbury to London Marylebone c. 1 hour
Banbury to London Paddington c. 1 hour 20 minutes

Mark David
ESTATE AGENTS
Sales • Lettings • Management

Market House, Market Place, Deddington, Oxfordshire
OX15 0SB
Tel: 01869 338898
Email: deddington@mark-david.co.uk
www.mark-david.co.uk



Important Notice

Mark David Estate Agents for themselves and their clients give notice that:-

1. They are not authorised to make or give representation or warranty in relation to this property, either on their own behalf or on behalf of the Seller. They assume no responsibility for any statement made in these particulars. These particulars do not form part of any offer or contract and must not be relied upon as statements or representations of fact.
2. Whilst every attempt has been made to ensure the accuracy of the floorplan contained here, measurements of doors, windows, rooms and any other items are approximate and no responsibility is taken for any error, omission, or mis-statement.
3. All areas, measurements or distances are approximate. The particulars are intended for guidance only and are not necessarily comprehensive. A wide angle lens may have been used in photography. Mark David Estate Agents have not tested appliances or services and it should not be assumed that the property has all necessary planning, building regulation and other consents. Buyers must satisfy themselves with the property by inspection or otherwise.
4. Reference to any mechanical or electrical equipment does not constitute a representation that such equipment is capable of fulfilling its function and prospective Buyers must make their own enquiries.
5. They have no responsibility for any expenses or costs incurred by prospective Buyers in inspecting properties which have been sold, let or withdrawn. Applicants are advised to contact the Agent to check availability and any other information of particular importance to them, prior to inspecting the property, particularly if traveling some distance.