

A two-story stone house with a dark slate roof and a covered entrance. The house is built from light-colored stone blocks. It has several white-framed windows, some of which are double-hung. The entrance is covered by a small roof supported by wooden posts. A chimney is visible on the roof. The house is set in a rural landscape with a green field and a wooden fence in the foreground. A tall street lamp stands to the left of the house. The sky is blue with some light clouds.

Plot 35 Hempton Gate, Deddington,  
Banbury, Oxfordshire, OX15 0QH



## Plot 35 Hempton Gate, Deddington, Banbury, Oxfordshire, OX15 0QH

An Attractive Two Bedroom Stone Built Semi Detached House Benefiting from Gas Central Heating, Double Glazed Windows, Own Driveway with Two Parking Spaces and Countryside Views.

The highly regarded town of Deddington offers many amenities including several shops providing for everyday needs, Post Office, Health & Community Centres, library, hotels and restaurants, recreation ground and the Church of St Peter and St Paul. There is a gym located on Clifton Road. Also, within the town there is the Church of England primary school plus Deddington falls within the Warriner catchment for secondary education. Further comprehensive facilities can be found in both Oxford and Banbury whilst access to the M40 motorway can be gained at Junctions 10 or 11. Mainline stations are also available from both Banbury and Bicester.



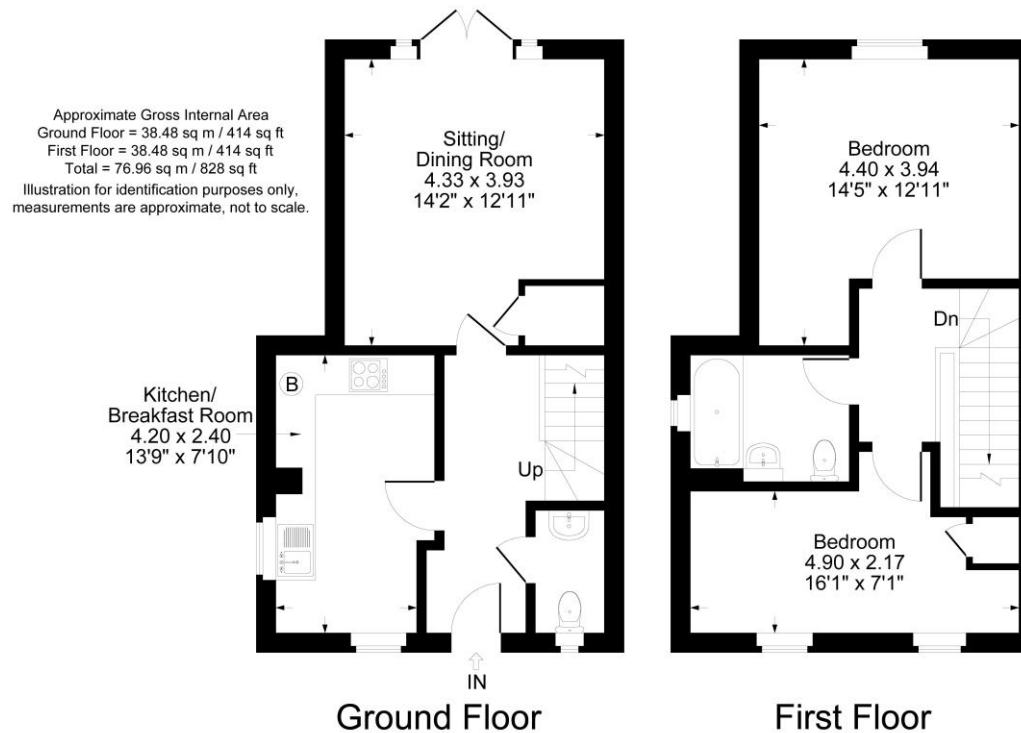


## The Property Briefly Comprises of:

- Sitting/Dining Room
- Kitchen/Breakfast Room
- Two Bedrooms
- Bathroom
- Rear Garden
- Off Road Parking for Two Vehicles
- Gas Central Heating
- Double Glazing
- Mixture of Bosch and Neff appliances
- Vinyl Flooring to Wet Area
- Ceramic Wall Tiling to Bathroom
- Provision of Garden Shed for Secure Cycle Parking / Gardening

Guide Price: £375,000





## Local Authority

Cherwell District Council

## Council Tax Band:

(Subject to change after completion)

## Tenure

Freehold

## Distances

Banbury c. 6 miles

Chipping Norton c. 10 miles

Bicester c. 12 miles

Oxford c. 18 miles

Birmingham c. 58 miles

London c. 73 miles

M40 access J10 c. 7 miles, J11 c. 8 miles

London via Bicester c. 43 minutes

**Mark David**

ESTATE AGENTS

Sales • Lettings • Management

Market House, Market Place, Deddington, Oxfordshire  
 OX15 0SB

Tel: 01869 338898

Email: [deddington@mark-david.co.uk](mailto:deddington@mark-david.co.uk)

[www.mark-david.co.uk](http://www.mark-david.co.uk)

### Important Notice

Mark David Estate Agents for themselves and their clients give notice that:-

1. They are not authorised to make or give representation or warranty in relation to this property, either on their own behalf or on behalf of the Seller. They assume no responsibility for any statement made in these particulars. These particulars do not form part of any offer or contract and must not be relied upon as statements or representations of fact.
2. Whilst every attempt has been made to ensure the accuracy of the floorplan contained here, measurements of doors, windows, rooms and any other items are approximate and no responsibility is taken for any error, omission, or mis-statement.
3. All areas, measurements or distances are approximate. The particulars are intended for guidance only and are not necessarily comprehensive. A wide angle lens may have been used in photography. Mark David Estate Agents have not tested appliances or services and it should not be assumed that the property has all necessary planning, building regulation and other consents. Buyers must satisfy themselves with the property by inspection or otherwise.
4. Reference to any mechanical or electrical equipment does not constitute a representation that such equipment is capable of fulfilling its function and prospective Buyers must make their own enquiries.
5. They have no responsibility for any expenses or costs incurred by prospective Buyers in inspecting properties which have been sold, let or withdrawn. Applicants are advised to contact the Agent to check availability and any other information of particular importance to them, prior to inspecting the property, particularly if traveling some distance.

