



Deddington,
Banbury, Oxfordshire

Deddington, Banbury, Oxfordshire

Located in the centre of Deddington, a delightful two bedroom end of terrace cottage with converted annexe, parking and gardens, with no onward chain.

The highly regarded town of Deddington offers many amenities including several shops providing for everyday needs, Post Office, Health & Community Centres, library, hotels and restaurants, recreation ground and the Church of St Peter and St Paul. There is a gym located on Clifton Road. Also, within the town there is the Church of England primary school plus Deddington falls within the Warriner catchment for secondary education. Further comprehensive facilities can be found in both Oxford and Banbury whilst access to the M40 motorway can be gained at Junctions 10 or 11. Mainline stations are also available from both Banbury and Bicester.





The Property Briefly Comprises of:

- Entrance Hall
- Kitchen/ Dining Room
- Utility Room
- Sitting Room
- Two Double Bedrooms
- Family Bathroom
- Driveway with Parking for Several Vehicles
- Detached Former Garage that has been Converted to a Third Bedroom /Office
- En Suite Shower Room to Third Bedroom
- Garden
- Gas Central Heating
- Double Glazed Windows
- No Chain

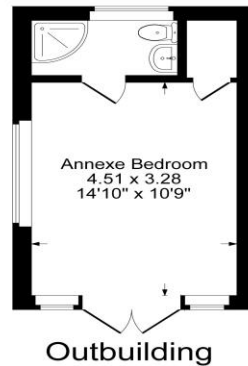
Guide Price: £399,000



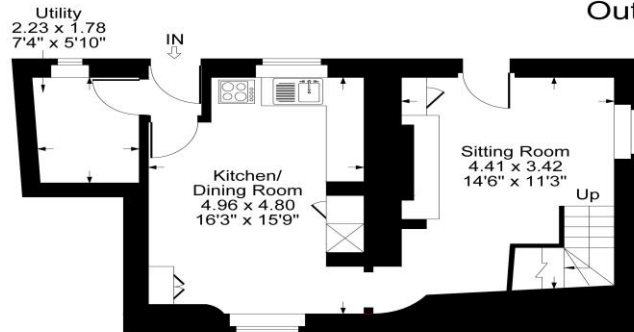


Approximate Gross Internal Area
 Ground Floor = 39.37 sq m / 424 sq ft
 First Floor = 36.21 sq m / 390 sq ft
 Outbuilding = 19.09 sq m / 205 sq ft
 Total Area = 94.67 sq m / 1019 sq ft

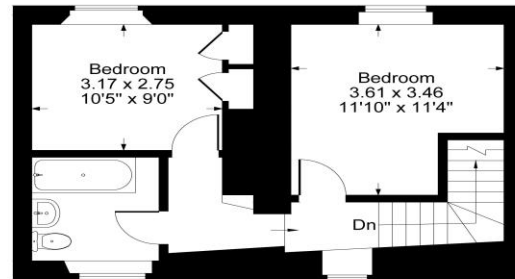
Illustration for identification purposes only,
 measurements are approximate, not to scale.



Outbuilding



Ground Floor



First Floor

Local Authority:
 Cherwell District Council

Council Tax Band: D
 (Subject to change after completion)

Tenure:
 Freehold

Distances:
 Banbury c. 6 miles
 Chipping Norton c. 10 miles
 Bicester c. 12 miles
 Oxford c. 18 miles
 Birmingham c. 58 miles
 London c. 73 miles
 M40 access J10 c. 7 miles, J11 c. 8 miles
 London via Bicester c. 43 minutes

Mark David
 ESTATE AGENTS
 Sales • Lettings • Management

Market House, Market Place, Deddington, Oxfordshire
 OX15 0SB
 Tel: 01869 338898
 Email: deddington@mark-david.co.uk
 www.mark-david.co.uk



Important Notice

Mark David Estate Agents for themselves and their clients give notice that:-

1. They are not authorised to make or give representation or warranty in relation to this property, either on their own behalf or on behalf of the Seller. They assume no responsibility for any statement made in these particulars. These particulars do not form part of any offer or contract and must not be relied upon as statements or representations of fact.
2. Whilst every attempt has been made to ensure the accuracy of the floorplan contained here, measurements of doors, windows, rooms and any other items are approximate and no responsibility is taken for any error, omission, or mis-statement.
3. All areas, measurements or distances are approximate. The particulars are intended for guidance only and are not necessarily comprehensive. A wide angle lens may have been used in photography. Mark David Estate Agents have not tested appliances or services and it should not be assumed that the property has all necessary planning, building regulation and other consents. Buyers must satisfy themselves with the property by inspection or otherwise.
4. Reference to any mechanical or electrical equipment does not constitute a representation that such equipment is capable of fulfilling its function and prospective Buyers must make their own enquiries.
5. They have no responsibility for any expenses or costs incurred by prospective Buyers in inspecting properties which have been sold, let or withdrawn. Applicants are advised to contact the Agent to check availability and any other information of particular importance to them, prior to inspecting the property, particularly if traveling some distance.