



Lower Heyford,
Oxfordshire

Lower Heyford, Oxfordshire

An Attractive Semi Detached, Double Fronted Stone Cottage with Two Double Bedrooms located in the Tranquil Village, Market Square of Lower Heyford.

Lower Heyford is a delightful village. Nestling in a valley with the River Cherwell parallel to the Oxford canal the local scenery is wonderful, with farmland surrounding the village. There is a good local school, a lovely old pub, local store, and access to all points of the compass is exceptional with the M40 and A34 close by and the Cherwell Valley railway line Heyford station within the village. For those looking for a rural existence combined with nearby access to all amenities there are few better Villages in North Oxfordshire.



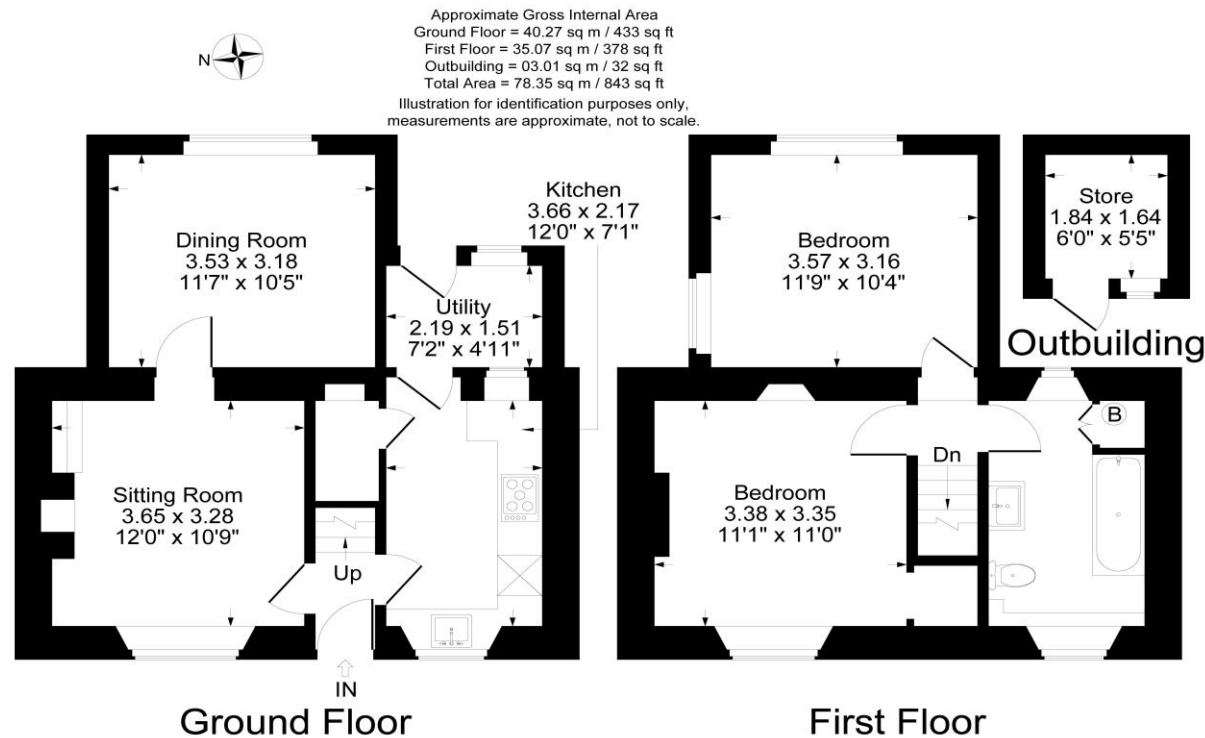


The Property Briefly Comprises of:

- Sitting Room with Woodburner
- Kitchen/Breakfast Room
- Second Reception Room/Dining Room
- Rear Porch
- Two Bedrooms
- Bathroom
- Garden
- Stone Outbuilding
- Double Glazing and Gas Central Heating



Guide Price: £450,000



Local Authority:

Cherwell District Council

Council Tax Band: C

(Subject to change after completion)

Tenure

Freehold

Distances

Bicester c. 7 miles
 Deddington c. 6 miles
 Oxford c. 18 miles
 Banbury c. 12 miles
 Birmingham c. 65 miles
 London c. 68 miles
 Chipping Norton c. 13 miles
 London Paddington via Bicester, c. 50 mins
 London Paddington via Oxford, c. 1 hour

Mark David
 ESTATE AGENTS
 Sales • Lettings • Management

Market House, Market Place, Deddington, Oxfordshire
 OX15 0SB
 Tel: 01869 338898
 Email: deddington@mark-david.co.uk
www.mark-david.co.uk



Important Notice

Mark David Estate Agents for themselves and their clients give notice that:-

1. They are not authorised to make or give representation or warranty in relation to this property, either on their own behalf or on behalf of the Seller. They assume no responsibility for any statement made in these particulars. These particulars do not form part of any offer or contract and must not be relied upon as statements or representations of fact.
2. Whilst every attempt has been made to ensure the accuracy of the floorplan contained here, measurements of doors, windows, rooms and any other items are approximate and no responsibility is taken for any error, omission, or mis-statement.
3. All areas, measurements or distances are approximate. The particulars are intended for guidance only and are not necessarily comprehensive. A wide angle lens may have been used in photography. Mark David Estate Agents have not tested appliances or services and it should not be assumed that the property has all necessary planning, building regulation and other consents. Buyers must satisfy themselves with the property by inspection or otherwise.
4. Reference to any mechanical or electrical equipment does not constitute a representation that such equipment is capable of fulfilling its function and prospective Buyers must make their own enquiries.
5. They have no responsibility for any expenses or costs incurred by prospective Buyers in inspecting properties which have been sold, let or withdrawn. Applicants are advised to contact the Agent to check availability and any other information of particular importance to them, prior to inspecting the property, particularly if traveling some distance.