



Swalcliffe, Oxfordshire

Swalcliffe, Oxfordshire

A Quintessential and Extremely Charming Grade II Listed Thatch Stone Cottage that is presented in the Highest of Conditions.

Swalcliffe is a village and civil parish about 6 miles west of the town of Banbury in the English county of Oxfordshire. Swalcliffe has one public house, The Stag's Head. There is also a boarding school, Swalcliffe Park School, for boys with special educational needs. Swalcliffe has a church, a village hall (available for public use) and is served by a bus connection to Banbury and Stratford-Upon-Avon several times a day.



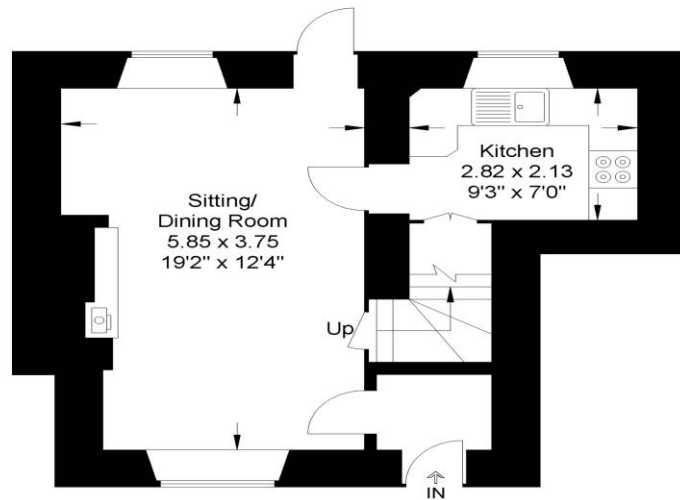


The Property Briefly Comprises of:

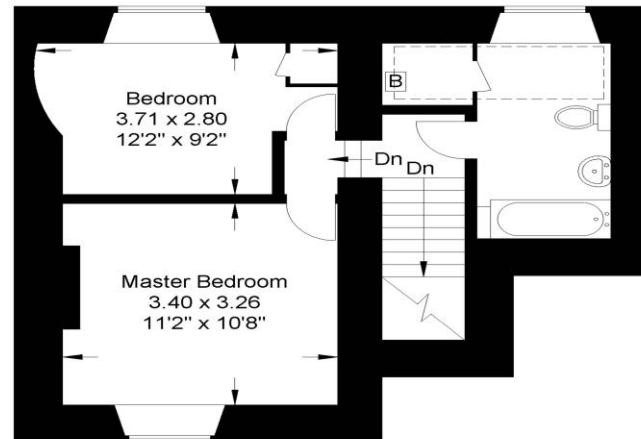
- Grade II Listed
- Entrance Hall
- Sitting/Dining Room with Inglenook Fireplace
- Kitchen
- Two Double Bedrooms
- Shower Room
- Fully Enclosed Rear Garden
- Large Wooden Shed
- Countryside Views



Guide Price: £350,000



Ground Floor



First Floor



Approximate Gross Internal Area
67.52 sq m / 726.77 sq ft

Illustration for identification purposes only,
measurements are approximate, not to scale.

Local Authority
Cherwell District Council

Council Tax Band:
D (TBC)
(Subject to change after completion)

Tenure
Freehold

Distances
Banbury c. 6 miles
Chipping Norton c. 9 miles
Oxford c. 26 miles
Birmingham c. 58 miles
London c. 83 miles
M40J11 c. 7 miles
London (Marylebone) via Banbury c.
1 hour

Mark David
ESTATE AGENTS
Sales • Lettings • Management

9 Market Place, Chipping Norton Oxfordshire
OX7 5NA
Tel: 01608 644944
Email: chippingnorton@mark-david.co.uk
www.mark-david.co.uk



Important Notice

Mark David Estate Agents for themselves and their clients give notice that:-

1. They are not authorised to make or give representation or warranty in relation to this property, either on their own behalf or on behalf of the Seller. They assume no responsibility for any statement made in these particulars. These particulars do not form part of any offer or contract and must not be relied upon as statements or representations of fact.
2. Whilst every attempt has been made to ensure the accuracy of the floorplan contained here, measurements of doors, windows, rooms and any other items are approximate and no responsibility is taken for any error, omission, or mis-statement.
3. All areas, measurements or distances are approximate. The particulars are intended for guidance only and are not necessarily comprehensive. A wide angle lens may have been used in photography. Mark David Estate Agents have not tested appliances or services and it should not be assumed that the property has all necessary planning, building regulation and other consents. Buyers must satisfy themselves with the property by inspection or otherwise.
4. Reference to any mechanical or electrical equipment does not constitute a representation that such equipment is capable of fulfilling its function and prospective Buyers must make their own enquiries.
5. They have no responsibility for any expenses or costs incurred by prospective Buyers in inspecting properties which have been sold, let or withdrawn. Applicants are advised to contact the Agent to check availability and any other information of particular importance to them, prior to inspecting the property, particularly if traveling some distance.