

Mark David

Bloxham

Bloxham

A Deceptively Spacious Non-Estate Four Bedroom, Extended and Detached Family Home with Private South Facing Gardens. End Of Chain Sale.

The picturesque village of Bloxham offers many amenities including a convenience store, Post Office, hairdressers, three Public Houses offering good food, doctors and dentist. The village has a good community spirit and offers many clubs ranging from babies and toddlers groups, to Brownies, Scouts, table tennis, football, mountaineering, bowls, WI, history and gardening clubs, to name a few.

Also within the village there is the Bloxham Church of England Primary School and secondary education at the Warriner School. Bloxham School is an independent co-educational school catering for boarders and day pupils. Tudor Hall Girls School is approximately 2 miles outside of the village. Further comprehensive facilities can be found in both Banbury and Oxford whilst access to the M40 motorway can be gained at Junctions 10 or 11. Mainline stations are also available from Banbury and Bicester.

Distances:

Banbury c. 3 miles

Deddington c. 4 miles

Chipping Norton c. 9 miles

Oxford c. 23 miles

Birmingham c. 55 miles

London c. 81 miles

M40 access c. 6 miles

Banbury to London Marylebone c. 1 hour

Council Tax Band: F

(Subject to change after completion)





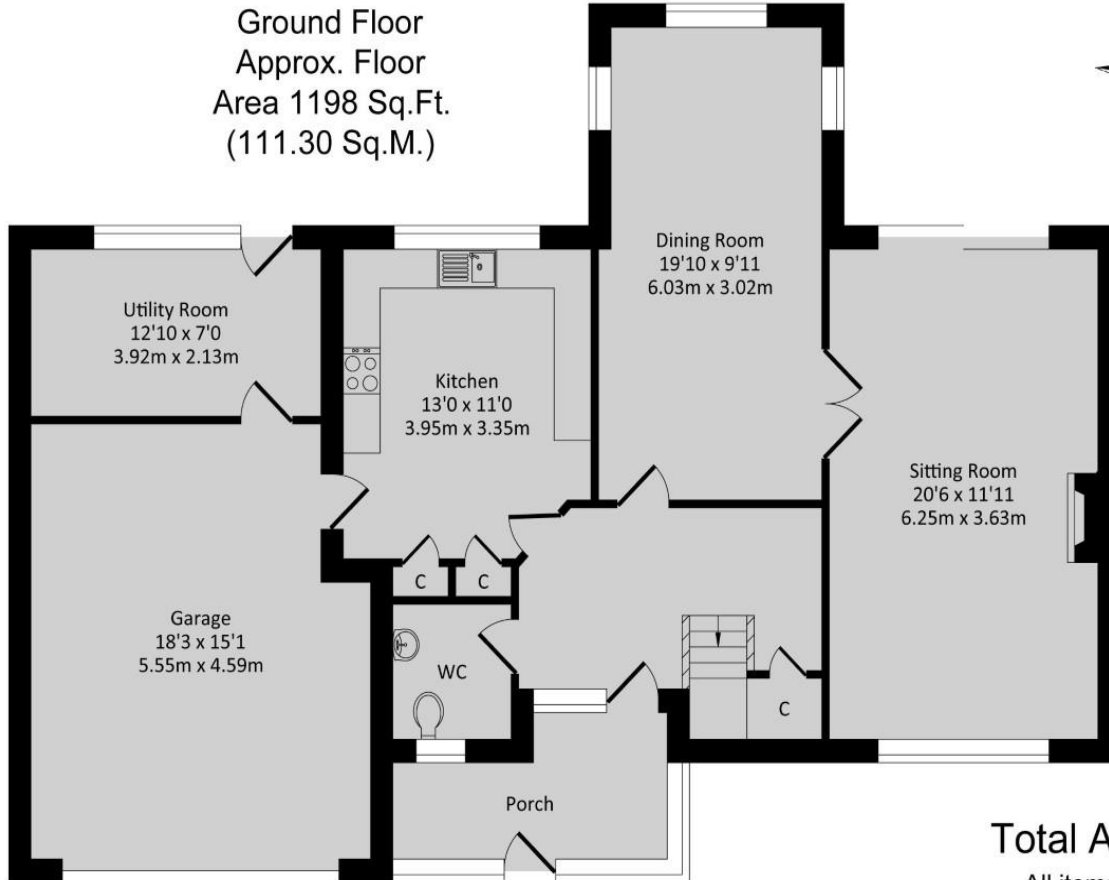
The Property Briefly Comprises of:

- Cloakroom
- Sitting Room
- Dining Room
- Kitchen / Breakfast Room
- Sunroom
- Four Bedrooms
- Family Bathroom
- Front and Rear Gardens
- Double Garage
- Driveway for Several Cars

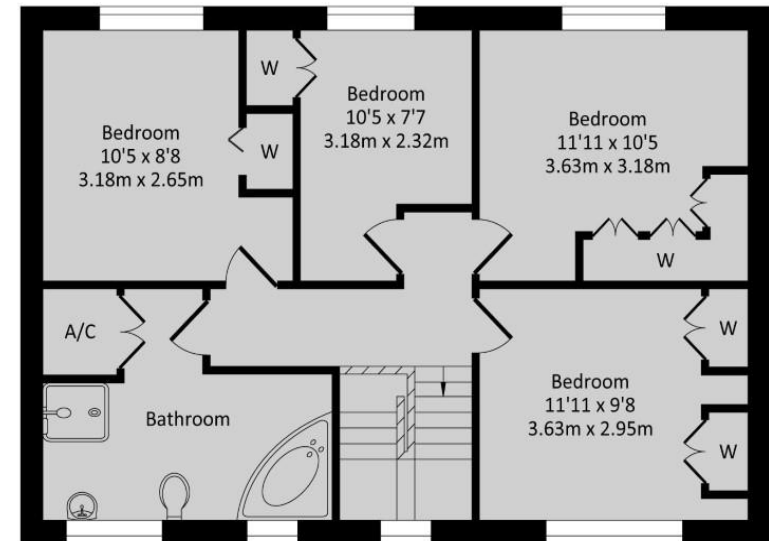


Guide Price: £600,000

Ground Floor
Approx. Floor
Area 1198 Sq.Ft.
(111.30 Sq.M.)



First Floor
Approx. Floor
Area 642 Sq.Ft.
(59.60 Sq.M.)



Total Approx. Floor Area 1840 Sq.Ft. (170.90 Sq.M.)

All items illustrated on this plan are included in the "Total Approx Floor Area"

Whilst every attempt has been made to ensure the accuracy of the floor plan contained here, measurements of doors, windows, rooms and any other items are approximate no responsibility is taken for any error, omission, or misstatement. This plan is for illustrative purposes only and should be used as such by any prospective purchaser. The Services Systems and appliance shown have not been tested and no guarantee as to their operability or efficiency can be given.

Mark David
ESTATE AGENTS
Sales • Lettings • Management

Market House, Market Place, Deddington, Oxfordshire
OX15 0SB
Tel: 01869 338898
Email: deddington@mark-david.co.uk
www.mark-david.co.uk



Important Notice

Mark David Estate Agents for themselves and their clients give notice that:-

1. They are not authorised to make or give representation or warranty in relation to this property, either on their own behalf or on behalf of the Seller. They assume no responsibility for any statement made in these particulars. These particulars do not form part of any offer or contract and must not be relied upon as statements or representations of fact.
2. Whilst every attempt has been made to ensure the accuracy of the floorplan contained here, measurements of doors, windows, rooms and any other items are approximate and no responsibility is taken for any error, omission, or mis-statement.
3. All areas, measurements or distances are approximate. The particulars are intended for guidance only and are not necessarily comprehensive. A wide angle lens may have been used in photography. Mark David Estate Agents have not tested appliances or services and it should not be assumed that the property has all necessary planning, building regulation and other consents. Buyers must satisfy themselves with the property by inspection or otherwise.
4. Reference to any mechanical or electrical equipment does not constitute a representation that such equipment is capable of fulfilling its function and prospective Buyers must make their own enquiries.
5. They have no responsibility for any expenses or costs incurred by prospective Buyers in inspecting properties which have been sold, let or withdrawn. Applicants are advised to contact the Agent to check availability and any other information of particular importance to them, prior to inspecting the property, particularly if traveling some distance.