



Lower Tadmarton
Oxfordshire

Lower Tadmarton, Oxfordshire

A Rarely Available Two Bedroom Bungalow Located on this Exclusive Development with South Facing Gardens and Countryside Views. No Onward Chain.

Lower Tadmarton is situated in a rural location with the countryside just a stroll away. It is within a reasonable distance to Banbury, the M40 motorway and the railway station. The village of Bloxham is 2 miles away.





The Property Briefly Comprises of:

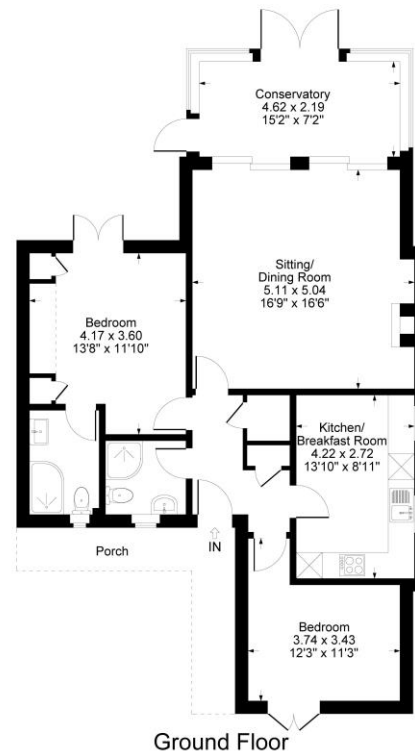
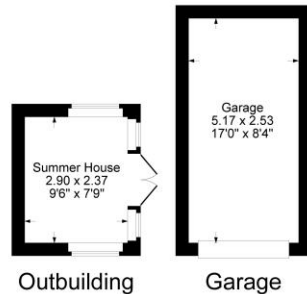
- Sitting Room/Dining Room
- Conservatory
- Kitchen/Breakfast Room
- Bedroom with Ensuite
- Further Double Bedroom
- Shower Room
- Garage
- South Facing Rear Garden
- Summerhouse
- Countryside Views
- Double Glazed Windows and Underfloor Heating (Where Specified)



Guide Price: £395,000



Approximate Gross Internal Area
 Ground Floor = 89.46 sq m / 963 sq ft
 Garage = 13.08 sq m / 141 sq ft
 Outbuilding = 6.87 sq m / 74 sq ft
 Total Area = 109.41 sq m / 1178 sq ft
 Illustration for identification purposes only,
 measurements are approximate, not to scale.



Local Authority
 Cherwell District Council

Council Tax Band: C

(Subject to change after completion)

Tenure

Freehold

Distances

Banbury c. 4 miles
 Deddington c. 6 miles
 Chipping Norton c. 11 miles
 Oxford c. 25 miles
 Birmingham c. 56 miles
 London c. 82 miles
 M40 access J11 c. 5 miles,
 London via Bicester North or
 Banbury, c. 1 hour

Mark David
 ESTATE AGENTS
 Sales • Lettings • Management

9 Market Place, Chipping Norton Oxfordshire
 OX7 5NA
 Tel: 01608 644944
 Email: chippingnorton@mark-david.co.uk
www.mark-david.co.uk



Important Notice

Mark David Estate Agents for themselves and their clients give notice that:-

1. They are not authorised to make or give representation or warranty in relation to this property, either on their own behalf or on behalf of the Seller. They assume no responsibility for any statement made in these particulars. These particulars do not form part of any offer or contract and must not be relied upon as statements or representations of fact.
2. Whilst every attempt has been made to ensure the accuracy of the floorplan contained here, measurements of doors, windows, rooms and any other items are approximate and no responsibility is taken for any error, omission, or mis-statement.
3. All areas, measurements or distances are approximate. The particulars are intended for guidance only and are not necessarily comprehensive. A wide angle lens may have been used in photography. Mark David Estate Agents have not tested appliances or services and it should not be assumed that the property has all necessary planning, building regulation and other consents. Buyers must satisfy themselves with the property by inspection or otherwise.
4. Reference to any mechanical or electrical equipment does not constitute a representation that such equipment is capable of fulfilling its function and prospective Buyers must make their own enquiries.
5. They have no responsibility for any expenses or costs incurred by prospective Buyers in inspecting properties which have been sold, let or withdrawn. Applicants are advised to contact the Agent to check availability and any other information of particular importance to them, prior to inspecting the property, particularly if traveling some distance.