



Duns Tew  
Oxfordshire

## Duns Tew, Oxfordshire

A Charming and Characterful Grade II Listed Cottage with Private Gardens and Countryside Views.

Duns Tew is a small village with a public house 'The White Horse'. It is close enough to the towns of Chipping Norton and Banbury, but it remains in the heart of the countryside close to bridleways and footpaths. There are also facilities for livery.



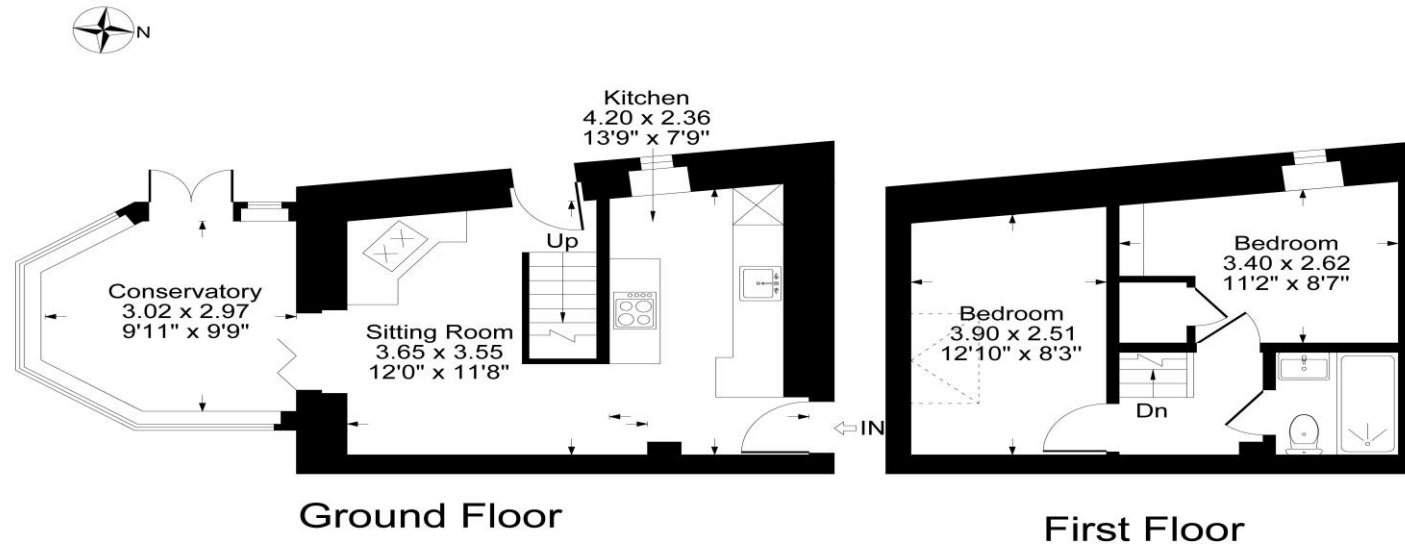


## The Property Briefly Comprises of:

- Sitting Room
- Kitchen
- Two Bedrooms
- Shower Room
- Rear Garden
- Woodburning Fire
- Resident Parking



Guide Price: £325,000



**Local Authority:**  
Cherwell District Council

**Council Tax Band: C**  
(Subject to change after completion)

**Tenure:**  
Freehold

**Distances:**  
 Deddington c. 3 miles  
 Banbury c. 9 miles  
 Chipping Norton c. 11 miles  
 Bicester c. 11 miles  
 Oxford c. 16 miles  
 Cheltenham c. 38 miles  
 London c. 61 miles  
 Birmingham c. 73 miles  
 M40 access c. 10 miles  
 London via Bicester c. 43 minutes  
 Oxford to London Paddington c. 1 hour

**Mark David**  
ESTATE AGENTS  
Sales • Lettings • Management

Market House, Market Place, Deddington, Oxfordshire  
OX15 0SB  
Tel: 01869 338898  
Email: deddington@mark-david.co.uk  
[www.mark-david.co.uk](http://www.mark-david.co.uk)



**Important Notice**

Mark David Estate Agents for themselves and their clients give notice that:-

1. They are not authorised to make or give representation or warranty in relation to this property, either on their own behalf or on behalf of the Seller. They assume no responsibility for any statement made in these particulars. These particulars do not form part of any offer or contract and must not be relied upon as statements or representations of fact.
2. Whilst every attempt has been made to ensure the accuracy of the floorplan contained here, measurements of doors, windows, rooms and any other items are approximate and no responsibility is taken for any error, omission, or mis-statement.
3. All areas, measurements or distances are approximate. The particulars are intended for guidance only and are not necessarily comprehensive. A wide angle lens may have been used in photography. Mark David Estate Agents have not tested appliances or services and it should not be assumed that the property has all necessary planning, building regulation and other consents. Buyers must satisfy themselves with the property by inspection or otherwise.
4. Reference to any mechanical or electrical equipment does not constitute a representation that such equipment is capable of fulfilling its function and prospective Buyers must make their own enquiries.
5. They have no responsibility for any expenses or costs incurred by prospective Buyers in inspecting properties which have been sold, let or withdrawn. Applicants are advised to contact the Agent to check availability and any other information of particular importance to them, prior to inspecting the property, particularly if traveling some distance.