

Duns Tew



Duns Tew

A Deceptively Spacious Stone Built Three Bedroom Cottage Style Residence with garage and the potential to extend upwards into the roof space (subject to planning) to create Further Bedroom accommodation that would have Superb Panoramic Views over open fields to Front and Rear Aspects.

Duns Tew is a small village with a public house 'The White Horse'. It is close enough to Soho Farmhouse and also the towns of Chipping Norton and Banbury, but it remains in the heart of the countryside close to bridleways and footpaths. There are also facilities for livery.





The Property Briefly Comprises of:

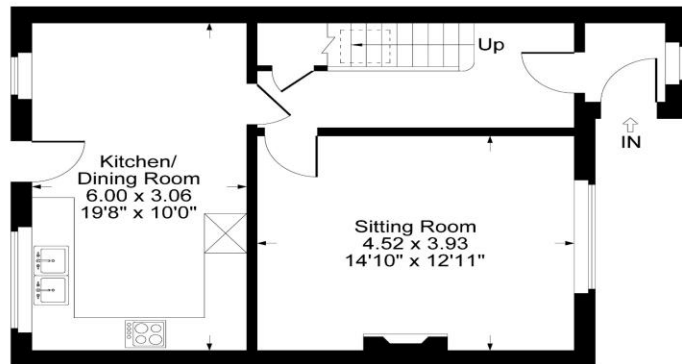
- Entrance Hall
- Balustrade Staircase
- Sitting Room with Open Fireplace and Exposed Wooden Floors
- Kitchen/Dining Room with Stable Door to Garden
- Three Good Size Bedrooms
- Family Bathroom with Tiled Floors Facing Lovely Views
- Front Garden with Enclosed Stone Wall And Gravel Area
- Private Rear Garden with Lawn and Patio
- Garage

The Property Benefits from Oil Central Heating and Double Glazed Windows.

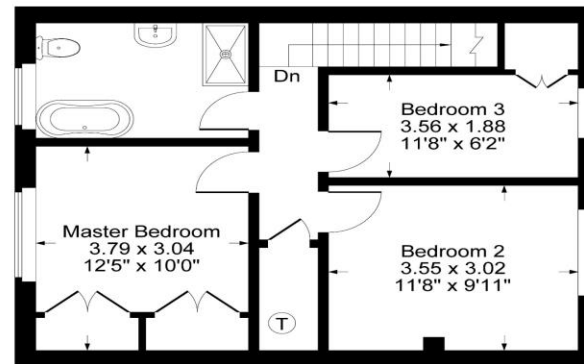
Photos taken in 2019 for marketing purposes.

Guide Price: £375,000





Ground Floor



First Floor

Approximate Gross Internal Area = 94.64 sq m / 1018.75 sq ft
Illustration for identification purposes only,
measurements are approximate, not to scale.

Local Authority
Cherwell District Council

Council Tax Band:
D
(Subject to change after completion)

Tenure
Freehold

Distances
Deddington c. 3 miles
Banbury c. 9 miles
Chipping Norton c. 11 miles
Bicester c. 11 miles
Oxford c. 16 miles
Cheltenham c. 38 miles
London c. 61 miles
Birmingham c. 73 miles
M40 access c. 10 miles
London via Bicester c. 43 minutes
Oxford to London Paddington c. 1 hour

Mark David
ESTATE AGENTS
Sales • Lettings • Management

Market House, Market Place, Deddington, Oxfordshire
OX15 0SB
Tel: 01869 338898
Email: deddington@mark-david.co.uk
www.mark-david.co.uk



Important Notice

Mark David Estate Agents for themselves and their clients give notice that:-

1. They are not authorised to make or give representation or warranty in relation to this property, either on their own behalf or on behalf of the Seller. They assume no responsibility for any statement made in these particulars. These particulars do not form part of any offer or contract and must not be relied upon as statements or representations of fact.
2. Whilst every attempt has been made to ensure the accuracy of the floorplan contained here, measurements of doors, windows, rooms and any other items are approximate and no responsibility is taken for any error, omission, or mis-statement.
3. All areas, measurements or distances are approximate. The particulars are intended for guidance only and are not necessarily comprehensive. A wide angle lens may have been used in photography. Mark David Estate Agents have not tested appliances or services and it should not be assumed that the property has all necessary planning, building regulation and other consents. Buyers must satisfy themselves with the property by inspection or otherwise.
4. Reference to any mechanical or electrical equipment does not constitute a representation that such equipment is capable of fulfilling its function and prospective Buyers must make their own enquiries.
5. They have no responsibility for any expenses or costs incurred by prospective Buyers in inspecting properties which have been sold, let or withdrawn. Applicants are advised to contact the Agent to check availability and any other information of particular importance to them, prior to inspecting the property, particularly if traveling some distance.