



Swalcliffe, Oxfordshire



## Swalcliffe, Oxfordshire

A Superb Four Bedroom Stone Cottage which has been Sympathetically Extended and has Views Over Open Fields.

Swalcliffe is a village and civil parish about 6 miles west of the town of Banbury in the English county of Oxfordshire. Swalcliffe has one public house, The Stag's Head. Swalcliffe has a church, a village hall (available for public use) and is served by a bus connection to Banbury and Stratford-Upon-Avon several times a day. It is Close to Banbury Train Station with frequent fast trains into London (59 minutes).



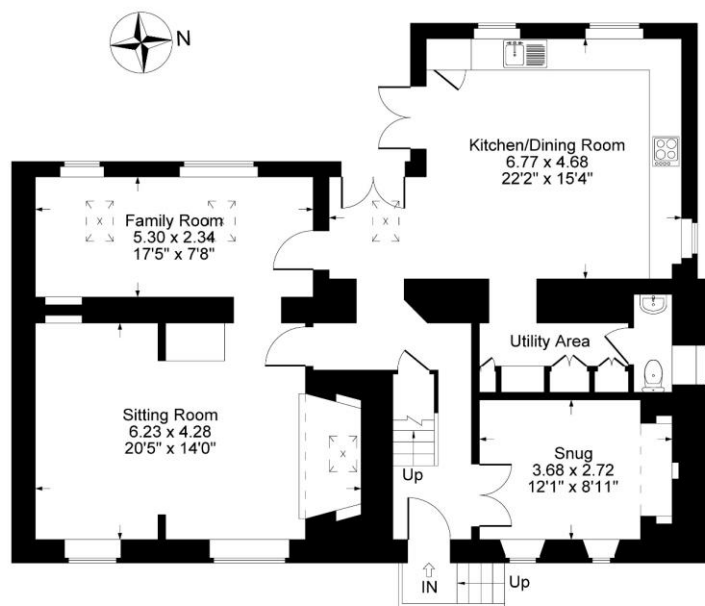




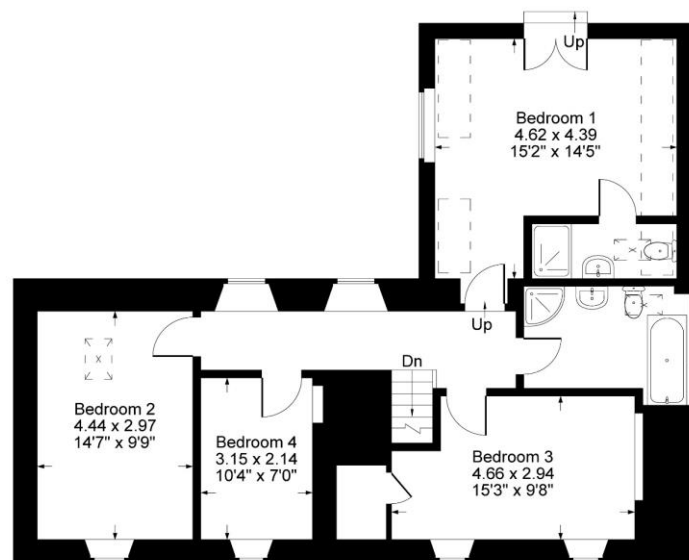
- Entrance hall
- Snug
- Sitting room
- Family room
- Large kitchen/dining/family room
- Utility area
- Cloakroom
- Master bedroom
- En-suite shower room
- Three further bedrooms
- Family bathroom
- Rear garden with seating area and fire pit
- A sizeable and fully functional garden office/studio/home gym with broadband and electricity connected
- The property backs onto open fields and countryside
- The property benefits from oil central heating and double glazed windows



Guide Price: £695,000



Ground Floor



First Floor

Approximate Gross Internal Area = 181.30 sq m / 1951.00 sq ft

Illustration for identification purposes only,  
measurements are approximate, not to scale.

**Local Authority:**  
Cherwell District Council

**Council Tax Band: E**  
(Subject to change after completion)

**Tenure**

Freehold

**Distances:**

Banbury c. 6 miles  
Chipping Norton c. 9 miles  
Oxford c. 26 miles  
Birmingham c. 58 miles  
London c. 83 miles  
M40J11 c. 7 miles  
London (Marylebone) via Banbury c.  
1 hour

**Mark David**  
ESTATE AGENTS  
Sales • Lettings • Management

Market House, Market Place, Deddington, Oxfordshire  
OX15 0SB  
Tel: 01869 338898  
Email: [deddington@mark-david.co.uk](mailto:deddington@mark-david.co.uk)  
[www.mark-david.co.uk](http://www.mark-david.co.uk)



**Important Notice**

Mark David Estate Agents for themselves and their clients give notice that:-

1. They are not authorised to make or give representation or warranty in relation to this property, either on their own behalf or on behalf of the Seller. They assume no responsibility for any statement made in these particulars. These particulars do not form part of any offer or contract and must not be relied upon as statements or representations of fact.
2. Whilst every attempt has been made to ensure the accuracy of the floorplan contained here, measurements of doors, windows, rooms and any other items are approximate and no responsibility is taken for any error, omission, or mis-statement.
3. All areas, measurements or distances are approximate. The particulars are intended for guidance only and are not necessarily comprehensive. A wide angle lens may have been used in photography. Mark David Estate Agents have not tested appliances or services and it should not be assumed that the property has all necessary planning, building regulation and other consents. Buyers must satisfy themselves with the property by inspection or otherwise.
4. Reference to any mechanical or electrical equipment does not constitute a representation that such equipment is capable of fulfilling its function and prospective Buyers must make their own enquiries.
5. They have no responsibility for any expenses or costs incurred by prospective Buyers in inspecting properties which have been sold, let or withdrawn. Applicants are advised to contact the Agent to check availability and any other information of particular importance to them, prior to inspecting the property, particularly if traveling some distance.