



Barford St. John, Banbury  
Oxfordshire

## Barford St. John, Banbury, Oxfordshire.

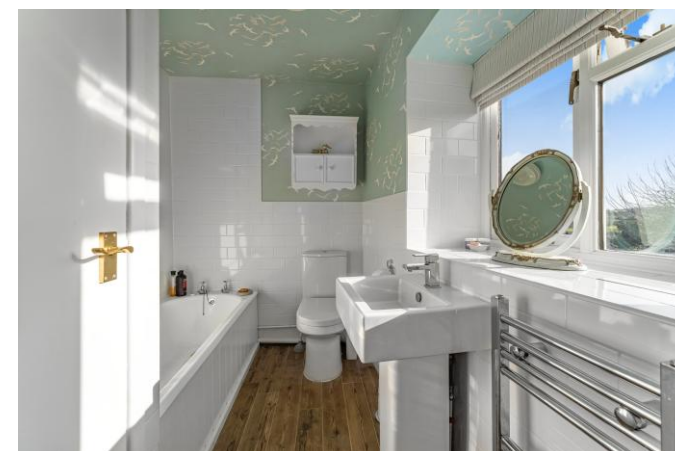
---

An Attractive Three Bedroom Stone Cottage with South Facing Gardens and Panoramic Views over Open Fields.

The property comprises of; Entrance Hall, Sitting Room, Orangery, Kitchen/Dining Room, Three Bedrooms with Views over Open Fields, and a Family Bathroom.

The Property benefits from an Integral Garage, and a wonderful South facing Garden with Panoramic Views over Open Fields.

The twin Villages of Barford St John and Barford St Michael are opposite one another and have a real sense of community feel about them, providing a thriving Village Hall, Public House and Post Office. The nearby villages of Deddington and Bloxham offer a good range of facilities.





## The Property Briefly Comprises of:

- Entrance Hall
- Sitting Room
- Orangery
- Kitchen/Dining Room
- Three Bedrooms with Views over Open Fields
- Family Bathroom
- Integral Garage
- South Facing Garden with Panoramic Views over Open Fields.

Guide Price: £475,000



Approximate Gross Internal Area = 139.4 sq m / 1500 sq ft  
(Including Garage)

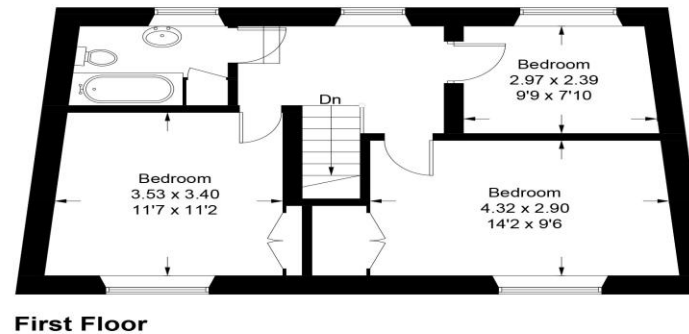
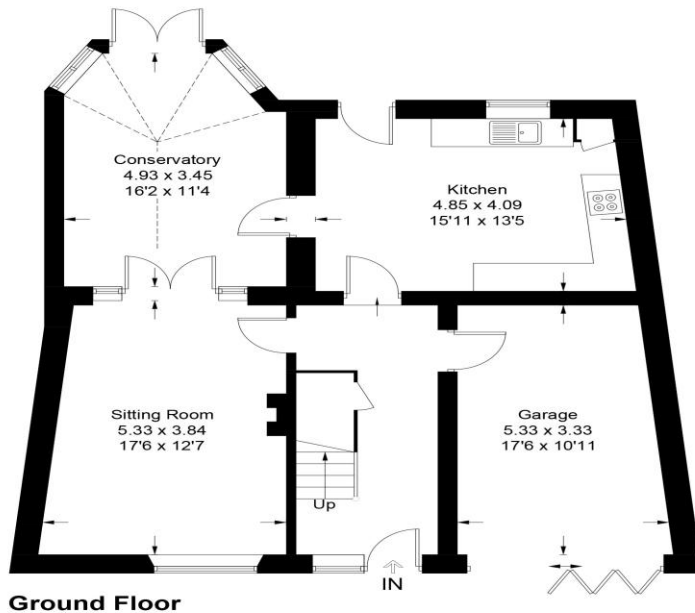


Illustration for identification purposes only, measurements are approximate, not to scale. Fourlabs.co © (ID1163100)

**Local Authority:**  
Cherwell District Council

**Council Tax Band:**  
(Subject to change after completion)

**Tenure:** Freehold

**Distances**

- Deddington c. 3 miles
- Bloxham c. 2 miles
- Banbury c. 6 miles
- Oxford c. 18 miles
- Birmingham c. 57 miles
- London c. 73 miles
- Rail links from Banbury to London c. 1 hour
- London Paddington via Oxford c. 1 hour

**Buyers Purchase Fee:**  
Please note that buyers are required to pay a Purchase Fee of £300 (inc. of VAT) to Mark David Estate Agents Ltd on offer acceptance, to process a new transaction.

**Mark David**  
ESTATE AGENTS  
Sales • Lettings • Management

Market House, Market Place, Deddington, Oxfordshire  
OX15 0SB  
Tel: 01869 338898  
Email: deddington@mark-david.co.uk  
[www.mark-david.co.uk](http://www.mark-david.co.uk)

**Important Notice**

Mark David Estate Agents for themselves and their clients give notice that:-  
1. They are not authorised to make or give representation or warranty in relation to this property, either on their own behalf or on behalf of the Seller. They assume no responsibility for any statement made in these particulars. These particulars do not form part of any offer or contract and must not be relied upon as statements or representations of fact.  
2. Whilst every attempt has been made to ensure the accuracy of the floorplan contained here, measurements of doors, windows, rooms and any other items are approximate and no responsibility is taken for any error, omission, or mis-statement.  
3. All areas, measurements or distances are approximate. The particulars are intended for guidance only and are not necessarily comprehensive. A wide angle lens may have been used in photography. Mark David Estate Agents have not tested appliances or services and it should not be assumed that the property has all necessary planning, building regulation and other consents. Buyers must satisfy themselves with the property by inspection or otherwise.  
4. Reference to any mechanical or electrical equipment does not constitute a representation that such equipment is capable of fulfilling its function and prospective Buyers must make their own enquiries.  
5. They have no responsibility for any expenses or costs incurred by prospective Buyers in inspecting properties which have been sold, let or withdrawn. Applicants are advised to contact the Agent to check availability and any other information of particular importance to them, prior to inspecting the property, particularly if traveling some distance.

